

CITY COUNCIL
COMMITTEE ON ZONING, LANDMARKS AND BUILDING STANDARDS

COUNCIL ORDER

RE: Approval of sign over 100 square feet in area or over 24 feet above grade

ORDERED, that the City Council hereby approves the following sign application submitted by:

Applicant*: Buddy Bear Car Wash

(* The Applicant is the owner of the real property or the business tenant of the real property. Do not list the sign contractor, sign erector, sign company or advertising entity in the above space.)

This Order approves the following sign in accordance with Municipal Code of Chicago Section 13-20-680:

Address of Sign: 221 W 83rd Chicago, IL 60620

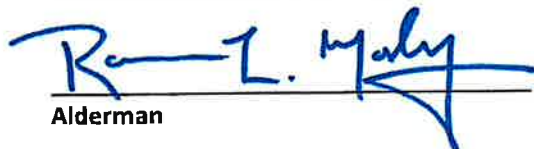
Zoning District: PD 966

DOB Sign Permit Application #: 101028225

Sign Details:

1. On-premise OR Off-premise
2. Static sign OR Dynamic-image display sign
3. Number of sign faces 2
4. Projecting over the public way No (Yes or No) If yes, Public Way Use #: _____
5. Dimensions: Length 12 feet 11 inches Height 10 feet 9 inches
Total square feet in area: 139 feet 0 inches
6. Height above grade: 14 feet 9 inches
7. Elevation (side of building or lot where the sign will be erected): North
8. Name of Sign Contractor/Erector: Aurora Sign Sompany

To be legal, such sign shall comply with all provisions of Title 17 of the Chicago Municipal Code ("Zoning Ordinance") and all other provisions of the Municipal Code governing the permitting, construction and maintenance and removal of signs and sign structures. Failure of the applicant and the applicant's successors to comply shall be grounds for invalidation or revocation of the sign permit.


Alderman

21
Ward

Signs 1

D/F Internal LED Illuminated Pylon Sign

Materials: Fabricate and install sign of aluminum & acrylic.
Sign Fabric: to be 3/16" white acrylic on both sides. With high performance vinyl applied first surface.

Reinforcing: 2" and 2" retainers

Illumination: Internal illumination to be white LEDs.
Finish: All exposed metal surfaces to be coated with acrylic polyurethane

2 - 5" DEEP ALUMINUM CHANNEL LOGOS
 BLACK PAINTED FINISH. ACRYLIC FACES & BACKS
 W/ BLACK & 3M 3630-141 GOLD NUGGET VINYL
 OVERLAYS & TRIM CAP. FACE & HALO LIT
 W/ LED LIGHTING. PROL. MTD. FROM 7/8" ALUMINUM
 BACKER, WHITE PAINTED FINISH

RAISED SEAM ALUMINUM ROOF & REVEAL,
 BLUE POLYURETHANE PAINTED FINISH.
 EXACT COLOR TO BE DETERMINED

5" DEEP ALUMINUM CHANNEL LETTERS
 PMS #267 BLUE POLYURETHANE PAINTED FINISH
 WHITE ACRYLIC FACES W/ 3M 3630-157 SULTAN
 BLUE VINYL OVERLAY & BLUE TRIM CAP.
 INTERNAL LED ILLUMINATION

5" DEEP ALUMINUM CHANNEL ARROW
 PMS #166 RED POLYURETHANE PAINTED FINISH
 WHITE ACRYLIC FACES W/ 3M 3630-33 RED VINYL
 OVERLAY & RED TRIM CAP.
 INTERNAL LED ILLUMINATION

LIMESTONE SILL

MASONRY & STONE BASE MONUMENT TO MATCH
 BUILDING

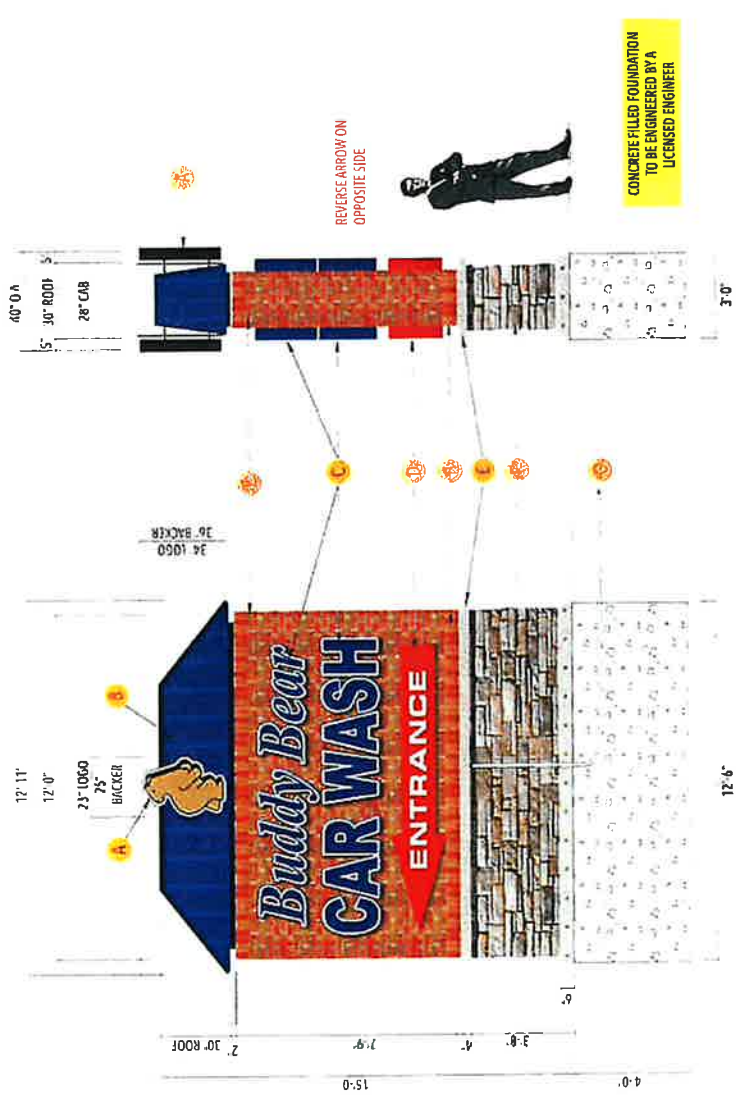
120V ELECTRICAL FEED TO DISCONNECT SWITCH

Scale 1/4" = 1'-0"
 Drawn By: AM

Computer generated colors are not a true match to any
 PMS, vinyl or paint. Rendering shown is for concept only.
 Actual scale and placement shown are approximate.

All Signs Shall be Installed in Accordance With I.E.C. Article 600
 Representing Specifications
 1. I.E.C. Article 600
 2. I.E.C. Article 600
 3. I.E.C. Article 600

LANDLORD APPROVAL SIGNATURE



FRONT VIEW 1/4" = 1'-0"
 2 REQUIRED

SIDE VIEW 1/4" = 1'-0"

NOT: THIS DRAWING IS THE PROPERTY OF AURORA SIGN CO. IT IS NOT TO BE REPRODUCED, COPIED, OR EXHIBITED IN ANY FASHION WITHOUT WRITTEN CONSENT FROM AURORA SIGN CO. CHARGES OF UP TO \$7000.00 WILL BE ASSESSED FOR ANY MIS-USE OF THESE DRAWINGS



Prepared For: BUDDY BEAR
 Location Name: CHICAGO, IL

Address: 221 W 83RD ST
 City/State: CHICAGO, IL

Drawg:	230659
Rev A	5-2-23
Rev B	5-30-23
Rev C	7-7-23

Sheet:	1	Design Date:	5-1-23
Rev A	1-10-24	Rev G	1-18-24
Rev B	1-12-24	Rev H	1-23-24
Rev C	1-17-24	Rev I	