

NOTES:

LAND LORD TO PROVIDE:

- ADEQUATE ACCESS BEHIND LOGO LETTER AND CABINET FOR INSTALLATION AND MAINTENANCE, PER ARTICLE 600 OF THE N.E.C.
- ONE (1) 20 AMP 120V ISOLATED SIGN CIRCUIT AND JUNCTION BOXES TO AREA BEHIND SIGN LETTERS CONNECTED TO THE ENERGY MANAGEMENT SYSTEM.
- AT LEAST 1/2" THICK PLYWOOD BACKING BEHIND ALL E.I.F.S. WALL SYSTEM FOR SIGN AND BANNER SUPPORT.

SIGN FASCIA TO BE FREE OF JOINTS & REVEALS, AND OF A LIGHT COLOR (MINIMUM 80% L.R.V.) TO PROVIDE HIGH CONTRAST AND VISIBILITY FOR THE SIGN.

ALL COLORS ARE SUBJECT TO ROSS STORES, INC. REVIEW AND APPROVAL. COLOR APPEARANCE MAY BE ALTERED BY PRINTING, SEE APPROVED FINAL CONSTRUCTION DRAWINGS FOR COLOR SPECIFICATIONS.

(A) 84"H INDIVIDUAL "ROSS" PAN CHANNEL LETTER-LOK LOGO LETTERS:
 FACES: .177 PLASKOLITE OPTIX LD (LIGHT DIFFUSING) 2406 WHITE WITH 3M 3730-167L BLUE VINYL FILM OVERLAY
 RETURNS: 8"D ALUM. W/ WHITE FINISH TRIM CAP: 2" WHITE JEWELITE LETTER BACKS: ALUMINUM
 LEDS: PRINCIPAL M-SFHW3-90 STREETFIGHTER HEAVYWEIGHT MODULES
 MOUNTING: 1/4"-20 GALV. THRU BOLTS PEG OFF: 1/2" SPACERS

(B) 34"H INDIVIDUAL "DFL" LOGO LETTERS:
 ALL CALLOUTS SAME AS "ROSS" EXCEPT:
 RETURNS: 5"D ALUM. W/ WHITE FINISH TRIM CAP: 1" WHITE JEWELITE

(C) 23"H x 46"W x 10"D DOUBLE-FACE INTERNALLY ILLUMINATED FLAG SIGN, SEE SHEET UCF FOR DETAILS

(D) 24"H x 48"W 1"D SINTRA OVAL "ROSS" LOGO WALL PLAQUES (2) REQUIRED AS SHOWN SEE SHEET EL FOR DETAILS.

(E) N/A

1 SIGN FASCIA BY LANDLORD, SEE NOTES.

2 N/A

3 FROSTED FILM BY LANDLORD.

4 N/A

5 STORE HOURS; INCLUDES STORE HOURS, OPERATIONAL DECAL, EBT, GUARD & RESERVE LTR. 55 & OVER AND EXIT/ENTER DECALS. SEE SHEET SH FOR DETAILS.

6 ADJACENT PARAPET PER LANDLORD BASE BUILDING DRAWINGS

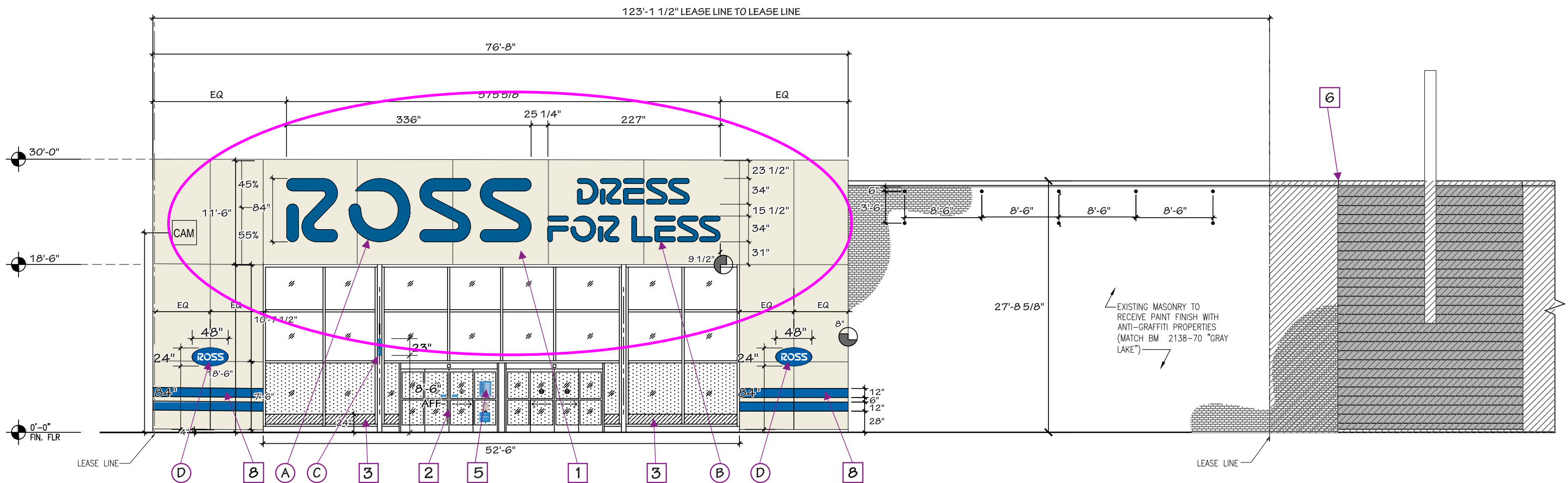
7 N/A

8 TYPICAL ROSS BLUE IDENTITY BANDS BY LANDLORD.

9 N/A

10 N/A

11 N/A



1 STOREFRONT • PARKING LOT • WEST • ELEVATION

Scale: 3/32" = 1'-0"

The information contained herein is intended to express design intent only. This original design is the sole property of Blair Image Elements. It cannot be reproduced, copied or exhibited, in whole or in part, without first obtaining written consent from Blair Image Elements.

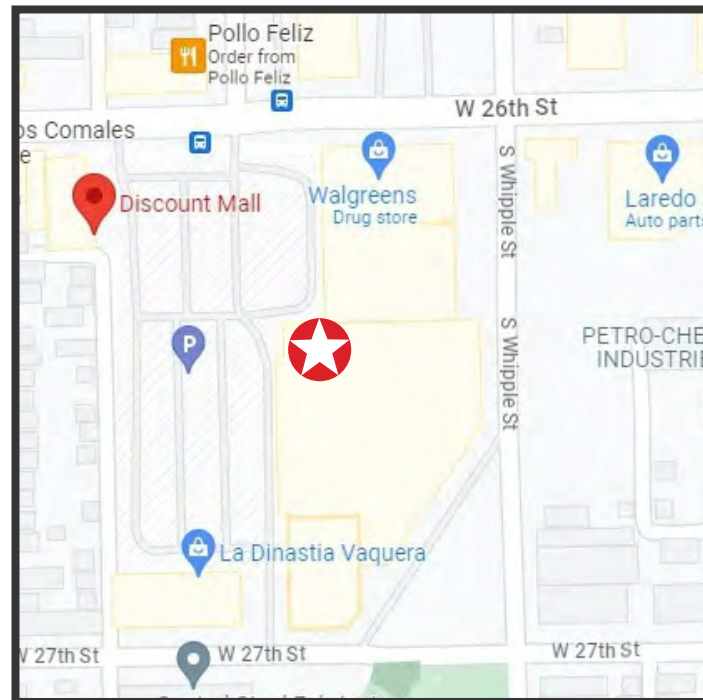
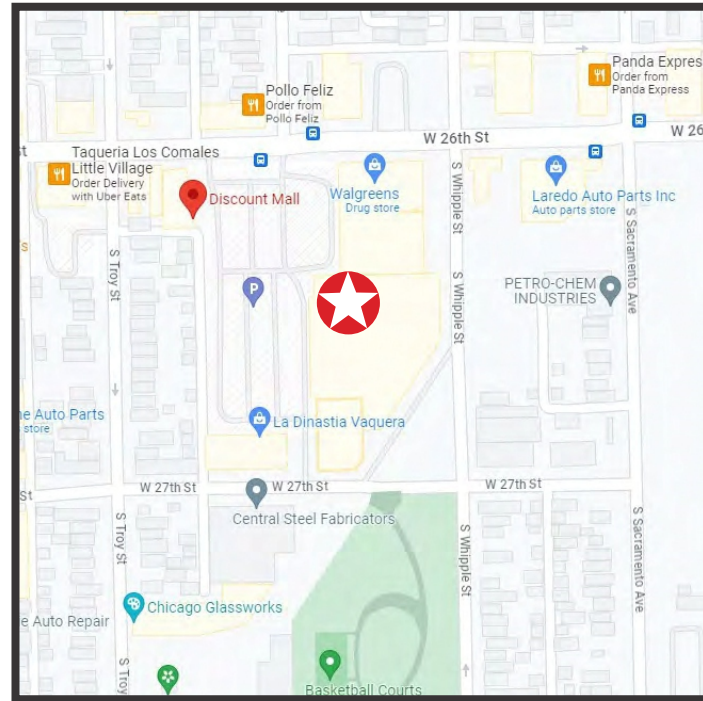
Blair Image Elements is not responsible for dimensions or notes outside of Blair Scope of Work.

AD-RSS102617 **blair** **ROSS** **IMAGE ELEMENTS** **DRESS FOR LESS**

#2595 Little Village, IL
 Little Village Plaza
 SWC West 26th Street & South
 Whipple Street Chicago, IL 60623

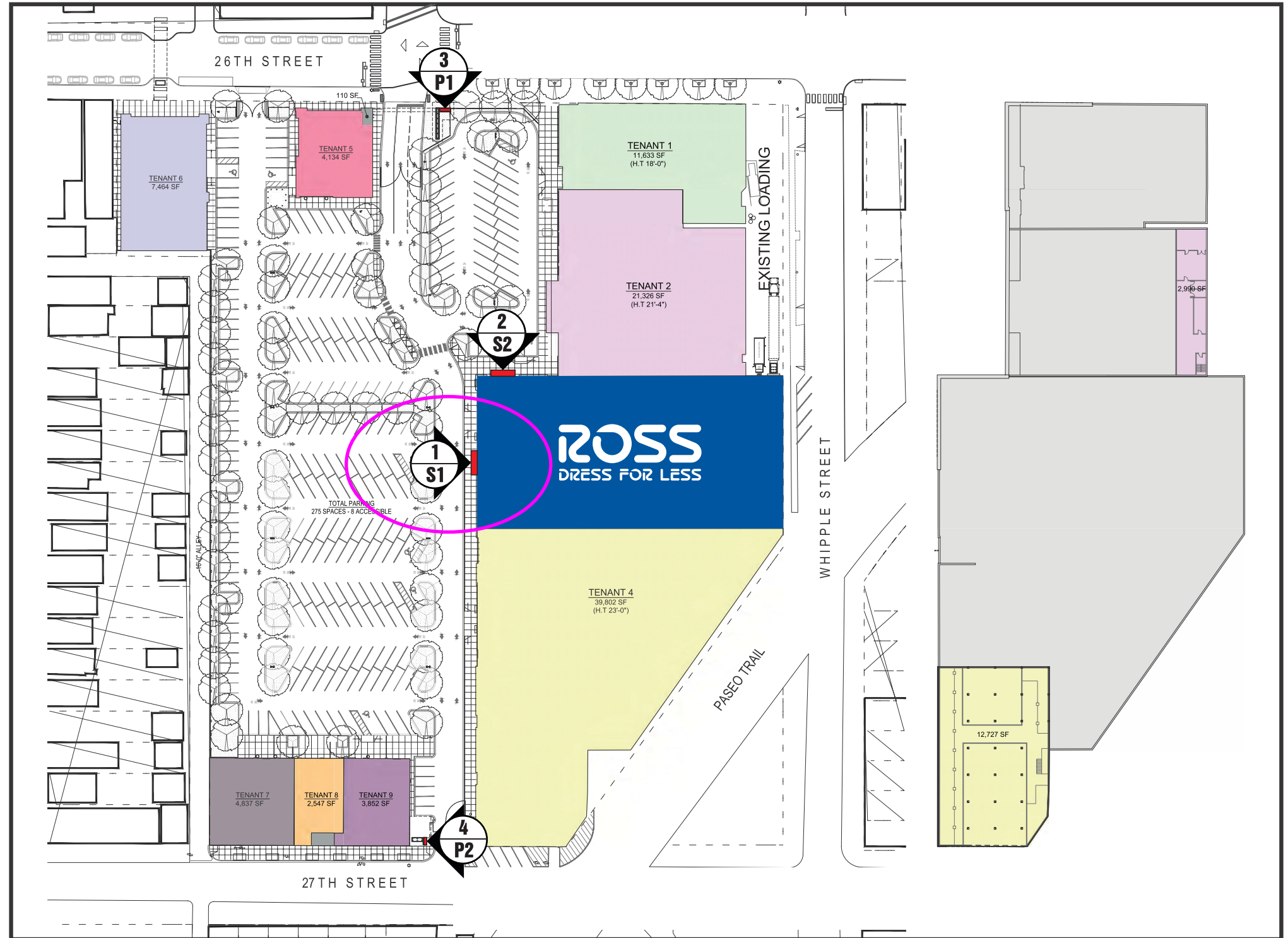
drawn _____ 08/16/23

TK-E
SHEET
S1



VICINITY MAP

NOT TO SCALE



SITE PLAN

NOT TO SCALE

EXHIBIT _____
PAGE _____ **OF** _____

The information contained herein is intended to express design intent only. This original design is the sole property of Blair Image Elements. It cannot be reproduced, copied or exhibited, in whole or in part, without first obtaining written consent from Blair Image Elements.

Blair Image Elements is not responsible for dimensions or notes outside of Blair Scope of Work.

AD-RSS102617



blair
 IMAGE ELEMENTS

ROSS
 DRESS FOR LESS

#2595 Little Village IL
 Little Village Plaza
 SWC West 26th Street & South Whipple Street Chicago, IL 60623

drawn _____ 08/16/23

TK-E

SHEET

K

