

CITY COUNCIL  
COMMITTEE ON ZONING, LANDMARKS AND BUILDING STANDARDS

COUNCIL ORDER

RE: Approval of sign over 100 square feet in area or over 24 feet above grade

ORDERED, that the City Council hereby approves the following sign application submitted by:

Applicant\*: HAMPTON INN & SUITES

(\* The Applicant is the owner of the real property or the business tenant of the real property. Do not list the sign contractor, sign erector, sign company or advertising entity in the above space.)

This Order approves the following sign in accordance with Municipal Code of Chicago Section 13-20-680:

Address of Sign: 710 S. SEELELY AVE Chicago, IL 60612

Zoning District: PD30

DOB Sign Permit Application #: 100991024

Sign Details:

1. On-premise  OR Off-premise
2. Static sign  OR Dynamic-image display sign
3. Number of sign faces 1
4. Projecting over the public way NO (Yes or No) If yes, Public Way Use #: \_\_\_\_\_
5. Dimensions: Length 36 feet 2 inches Height 4 feet 0 inches  
Total square feet in area: 145 feet \_\_\_\_\_ inches
6. Height above grade: 70 feet \_\_\_\_\_ inches
7. Elevation (side of building or lot where the sign will be erected): EAST
8. Name of Sign Contractor/Erector: DOYLE SIGNS, INC.

To be legal, such sign shall comply with all provisions of Title 17 of the Chicago Municipal Code ("Zoning Ordinance") and all other provisions of the Municipal Code governing the permitting, construction and maintenance and removal of signs and sign structures. Failure of the applicant and the applicant's successors to comply shall be grounds for invalidation or revocation of the sign permit.



Alderman

28th

Ward

EAST ELEVATION  
 SCALE: 1/16" = 1' 0"  
 FRONTAGE: 246' 6"

42' 6"

11.425' HEADLINE LEVEL  
 11.425' WALL LEVEL

*Hampton Inn & Suites*



**LAURETANO**  
 SIGN GROUP  
 1 Tremco Drive, Terryville, CT 06786  
 phone: 860.582.0233 fax: 860.583.0949  
 signs@lauretano.com www.lauretano.com

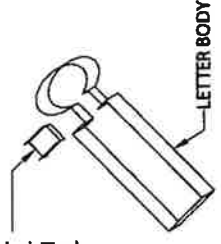
Print 2930GG	Date 3/2/22	ES# 42809	Line A	SP AC	Sign Type HIS BL48L-R
<b>CLIENT APPROVAL</b>			Title Hampton Inn & Suites	Location East Elevation	Size 4' 0" x 36' 1.25" (139.33 sq ft)
AUTHORIZED SIGNATURE			City/State Chicago IL	Description Red day/Red night LED CLS	
DATE			Customer Hampton Inn & Suites		
1 of 2			<small>This drawing contains original elements created by Lauretano Sign Group, Inc. and is subject to all applicable copyright laws. The drawing may not be used in any way until full payment is received by Lauretano Sign Group, Inc. It is intended for review and approval purposes only, and is not to be reproduced, copied, transmitted by electronic media, or exhibited in any fashion to anyone outside your organization without the expressed written consent of Lauretano Sign Group, Inc.</small>		

36' 1.25"

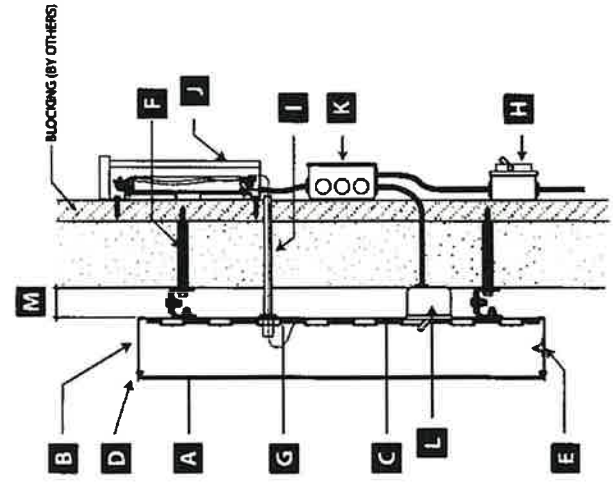
# Hampton Inn & Suites

Scale: 3/16" = 1'

.040 THK. ALUM. BRIDGE COVER. PAINT TO MATCH WALL



TYPICAL BRIDGE DETAIL  
NTS



**MATERIALS / COLORS**

- A Red acrylic faces
- B 5" deep, .040 aluminum coil, bronze
- C .063 aluminum backs, CAD-cut
- D 1" Jewelfite, bronze
- E weep holes & light shields in low points, (2) req'd per letter
- F 4" LAG BOLTS, SPACERS, AND SILICONE (2" X 2" GAL. SHOES)
- G Red LEDs (3 LEDs/module, 2 modules/ft.)
- H LOCKABLE PRIMARY POWER DISCONNECT SWITCH (BY OTHERS) INSIDE THE BUILDING
- I WALL BUSTER OR EQUIVALENT. PLTC CABLE, SEAL PASS-THRU w/ SILICONE
- J remote PS12-60 power supplies mounted in transformer enclosures
- K J-box w/ primary electrical by others
- L PRIMARY POWER DISCONNECT SWITCH INSTALLED ADJACENT TO SIGN
- M sign back to fascia distance = 2"

**NOTES**

1. LIGHT-ENHANCEMENT PAINT TO BE APPLIED TO CL INTERIORS.
2. UL LABELS REQUIRED - INSTALL IN ACCORDANCE WITH NEC
3. PRIMARY ELECTRICAL BY OTHERS.
4. FASCIA: EFS, COLOR TBD

Typical Construction and Mounting Detail  
NTS

**PROCEED TO PRODUCTION**

Print 2930GG  
ES# 42809

Date 3/2/22  
Rev A

Installation Method

Shoes w/ Lags

AUTHORIZED SIGNATURE

DATE

2 of 2

This drawing contains original elements created by Lauretano Sign Group, Inc. It is the property of Lauretano Sign Group, Inc. and is subject to all applicable copyright laws. This drawing may not be used in any way until full payment is received by Lauretano Sign Group, Inc. It is intended for review and approval purposes only, and is not to be reproduced, copied, transmitted by electronic media, or exhibited in any fashion to anyone outside your organization without the expressed written consent of Lauretano Sign Group, Inc.

**LAURETANO**  
SIGN GROUP

1 Thomas Drive, Terryville, CT 06716 • Phone: 860.582.0233  
sign@lauretano.com www.lauretano.com

Amps 3.4  
Volts 120