

CITY COUNCIL
COMMITTEE ON ZONING, LANDMARKS AND BUILDING STANDARDS

COUNCIL ORDER

RE: Approval of sign over 100 square feet in area or over 24 feet above grade

ORDERED, that the City Council hereby approves the following sign application submitted by:

Applicant*: RUSH SPECIALITY
(* The Applicant is the owner of the real property or the business tenant of the real property. Do not list the sign contractor, sign erector, sign company or advertising entity in the above space.)

This Order approves the following sign in accordance with Municipal Code of Chicago Section 13-20-680:

Address of Sign: 516 SOUTH LOOMIS STREET Chicago, IL 60607

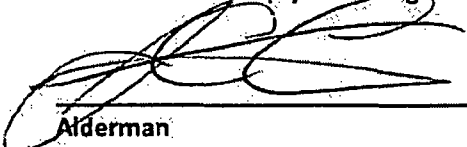
Zoning District: PD168

DOB Sign Permit Application #: 101006921

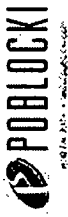
Sign Details:

1. On-premise OR Off-premise
2. Static sign OR Dynamic-image display sign
3. Number of sign faces 1
4. Projecting over the public way NO (Yes or No) If yes, Public Way Use #: _____
5. Dimensions: Length 15' feet 1 1/8 inches Height 5 feet 2 3/4 inches
Total square feet in area: 78 feet .92 inches
6. Height above grade: 66 feet 0 inches
7. Elevation (side of building or lot where the sign will be erected): SOUTH
8. Name of Sign Contractor/Erector: POBLOCKI SIGN COMPANY

To be legal, such sign shall comply with all provisions of Title 17 of the Chicago Municipal Code ("Zoning Ordinance") and all other provisions of the Municipal Code governing the permitting, construction and maintenance and removal of signs and sign structures. Failure of the applicant and the applicant's successors to comply shall be grounds for invalidation or revocation of the sign permit.


Alderman

28TH
Ward



ALL DOCUMENTS ARE THE PROPERTY OF PUBLICKI & ASSOCIATES, CHICAGO, ILLINOIS. NO PART OF THIS DOCUMENT IS TO BE REPRODUCED OR TRANSMITTED IN ANY FORM OR BY ANY MEANS, ELECTRONIC OR MECHANICAL, INCLUDING PHOTOCOPYING, RECORDING, OR BY ANY INFORMATION STORAGE AND RETRIEVAL SYSTEM, WITHOUT THE WRITTEN PERMISSION OF PUBLICKI & ASSOCIATES, CHICAGO, ILLINOIS. THIS DOCUMENT IS TO BE USED ONLY FOR THE PROJECT AND SITE SPECIFICALLY IDENTIFIED HEREIN. ANY REUSE OF THIS DOCUMENT FOR ANY OTHER PROJECT WITHOUT THE WRITTEN PERMISSION OF PUBLICKI & ASSOCIATES, CHICAGO, ILLINOIS, IS STRICTLY PROHIBITED.

Project:
**Rush Medical
 Special Hospital**
 Chicago, Illinois

Scale: 3/16"=1'
 Original Paper Size: 11" x 17"

Notes:

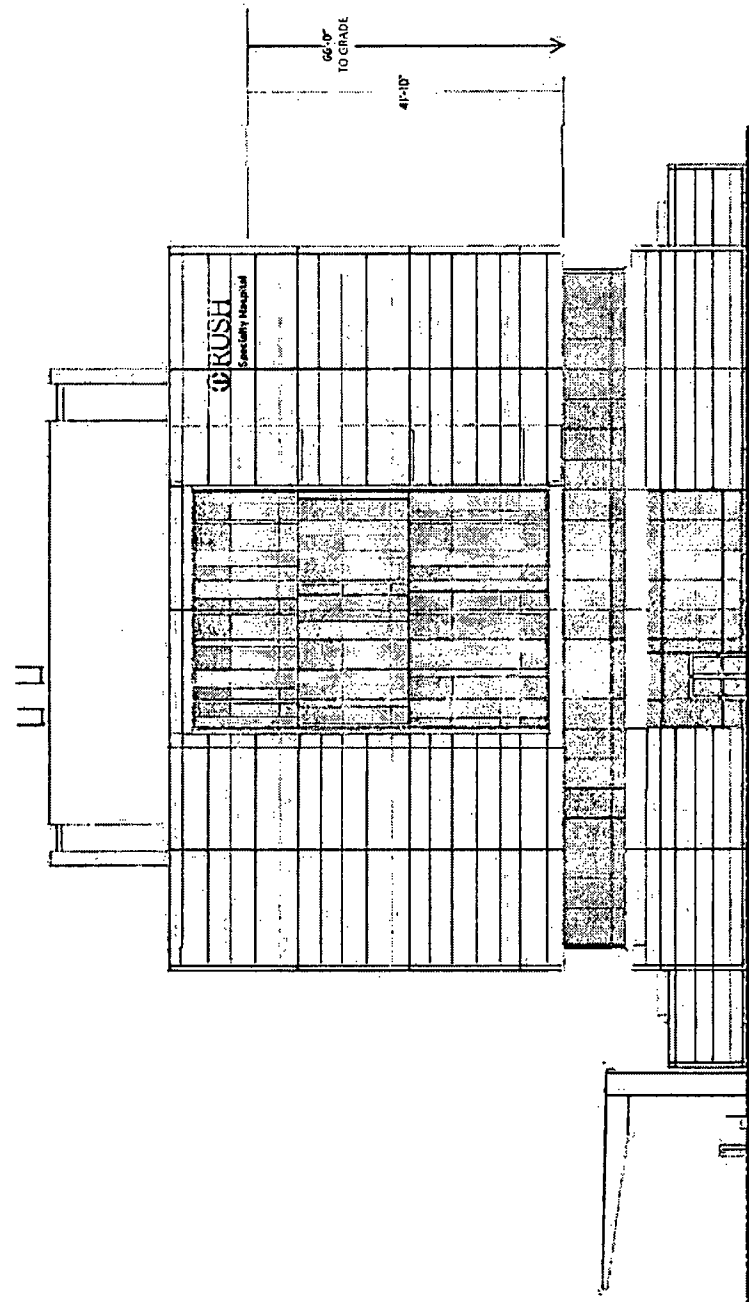
Revisions

NO.	DATE	BY	DESCRIPTION
1	05/24/17	JK	ISSUE FOR PERMIT

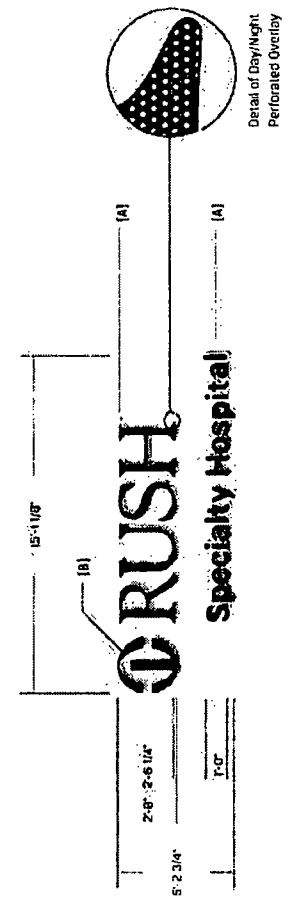
Significance:

City: Down Memorial
 Project: Rush Medical
 Significance: A

94832
 City: Rush Medical
 Project: Rush Medical
 Significance: A

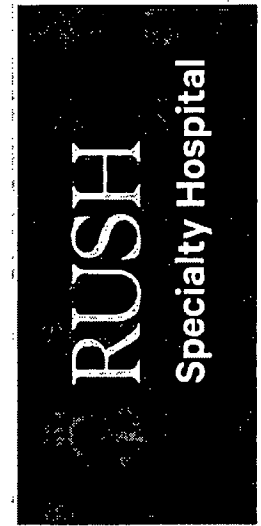


Proposed South Elevation - 1/16" = 1'-0"



SIGN SPECIFICATIONS

- (A) - ILLUMINATED LETTERS**
 Lighting: LED
 Description: Face-Lit
 Face Color: White Acrylic with 3M 3635-222
 Dual Color: Film Black
 Return Color: Black
 Trimcap Color: Black
 Installation: Flush to wall
- (B) - ILLUMINATED LETTERS**
 Lighting: LED
 Description: Face-Lit
 Face Color: White Acrylic with 3M 3630-266 Green Overlay
 Return Color: Paint to match 3M 3630-26 Green
 Trimcap Color: Paint to match 3M 3630-26 Green
 Installation: Flush to wall



Illuminated Night Simulation

GWG³
 ARCHITECTURE PLLC
 600 Main Street
 Suite 300
 North LaSalle Street, Chicago, IL 60610
 Phone: 312.597.7400
 www.gwgarch.com

100%
 CONSTRUCTION
 DOCUMENTS

RUSH
 Specialty Hospital
 211 S. LA SALLE STREET

RUSH SPECIALTY
 HOSPITAL IN
 PARTNERSHIP WITH
 SELECT MEDICAL

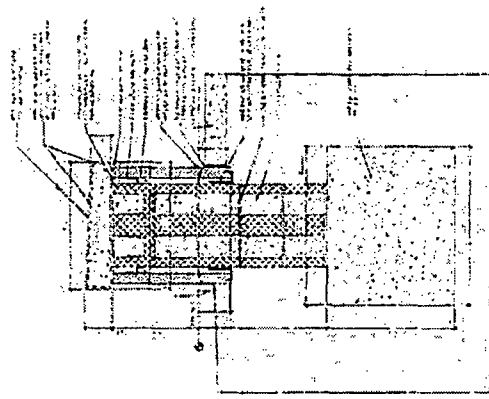
516 S. LOOMIS ST.
 CHICAGO, IL 60607



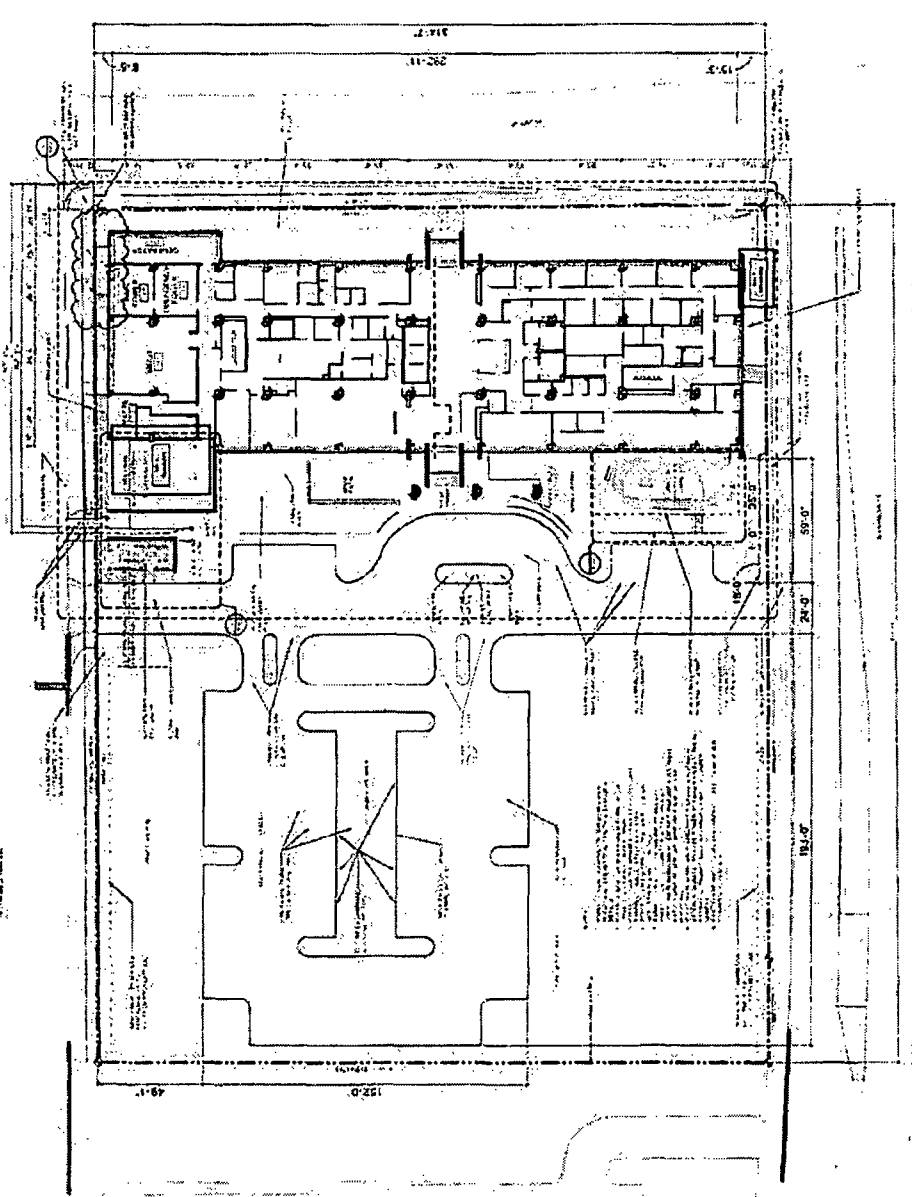
DATE	DESCRIPTION
10/2001	PRELIMINARY
11/2001	REVISED
12/2001	REVISED
01/2002	REVISED
02/2002	REVISED
03/2002	REVISED
04/2002	REVISED
05/2002	REVISED
06/2002	REVISED
07/2002	REVISED
08/2002	REVISED
09/2002	REVISED
10/2002	REVISED
11/2002	REVISED
12/2002	REVISED
01/2003	REVISED
02/2003	REVISED
03/2003	REVISED
04/2003	REVISED
05/2003	REVISED
06/2003	REVISED
07/2003	REVISED
08/2003	REVISED
09/2003	REVISED
10/2003	REVISED
11/2003	REVISED
12/2003	REVISED
01/2004	REVISED
02/2004	REVISED
03/2004	REVISED
04/2004	REVISED
05/2004	REVISED
06/2004	REVISED
07/2004	REVISED
08/2004	REVISED
09/2004	REVISED
10/2004	REVISED
11/2004	REVISED
12/2004	REVISED
01/2005	REVISED
02/2005	REVISED
03/2005	REVISED
04/2005	REVISED
05/2005	REVISED
06/2005	REVISED
07/2005	REVISED
08/2005	REVISED
09/2005	REVISED
10/2005	REVISED
11/2005	REVISED
12/2005	REVISED
01/2006	REVISED
02/2006	REVISED
03/2006	REVISED
04/2006	REVISED
05/2006	REVISED
06/2006	REVISED
07/2006	REVISED
08/2006	REVISED
09/2006	REVISED
10/2006	REVISED
11/2006	REVISED
12/2006	REVISED
01/2007	REVISED
02/2007	REVISED
03/2007	REVISED
04/2007	REVISED
05/2007	REVISED
06/2007	REVISED
07/2007	REVISED
08/2007	REVISED
09/2007	REVISED
10/2007	REVISED
11/2007	REVISED
12/2007	REVISED
01/2008	REVISED
02/2008	REVISED
03/2008	REVISED
04/2008	REVISED
05/2008	REVISED
06/2008	REVISED
07/2008	REVISED
08/2008	REVISED
09/2008	REVISED
10/2008	REVISED
11/2008	REVISED
12/2008	REVISED
01/2009	REVISED
02/2009	REVISED
03/2009	REVISED
04/2009	REVISED
05/2009	REVISED
06/2009	REVISED
07/2009	REVISED
08/2009	REVISED
09/2009	REVISED
10/2009	REVISED
11/2009	REVISED
12/2009	REVISED
01/2010	REVISED
02/2010	REVISED
03/2010	REVISED
04/2010	REVISED
05/2010	REVISED
06/2010	REVISED
07/2010	REVISED
08/2010	REVISED
09/2010	REVISED
10/2010	REVISED
11/2010	REVISED
12/2010	REVISED
01/2011	REVISED
02/2011	REVISED
03/2011	REVISED
04/2011	REVISED
05/2011	REVISED
06/2011	REVISED
07/2011	REVISED
08/2011	REVISED
09/2011	REVISED
10/2011	REVISED
11/2011	REVISED
12/2011	REVISED
01/2012	REVISED
02/2012	REVISED
03/2012	REVISED
04/2012	REVISED
05/2012	REVISED
06/2012	REVISED
07/2012	REVISED
08/2012	REVISED
09/2012	REVISED
10/2012	REVISED
11/2012	REVISED
12/2012	REVISED
01/2013	REVISED
02/2013	REVISED
03/2013	REVISED
04/2013	REVISED
05/2013	REVISED
06/2013	REVISED
07/2013	REVISED
08/2013	REVISED
09/2013	REVISED
10/2013	REVISED
11/2013	REVISED
12/2013	REVISED
01/2014	REVISED
02/2014	REVISED
03/2014	REVISED
04/2014	REVISED
05/2014	REVISED
06/2014	REVISED
07/2014	REVISED
08/2014	REVISED
09/2014	REVISED
10/2014	REVISED
11/2014	REVISED
12/2014	REVISED
01/2015	REVISED
02/2015	REVISED
03/2015	REVISED
04/2015	REVISED
05/2015	REVISED
06/2015	REVISED
07/2015	REVISED
08/2015	REVISED
09/2015	REVISED
10/2015	REVISED
11/2015	REVISED
12/2015	REVISED
01/2016	REVISED
02/2016	REVISED
03/2016	REVISED
04/2016	REVISED
05/2016	REVISED
06/2016	REVISED
07/2016	REVISED
08/2016	REVISED
09/2016	REVISED
10/2016	REVISED
11/2016	REVISED
12/2016	REVISED
01/2017	REVISED
02/2017	REVISED
03/2017	REVISED
04/2017	REVISED
05/2017	REVISED
06/2017	REVISED
07/2017	REVISED
08/2017	REVISED
09/2017	REVISED
10/2017	REVISED
11/2017	REVISED
12/2017	REVISED
01/2018	REVISED
02/2018	REVISED
03/2018	REVISED
04/2018	REVISED
05/2018	REVISED
06/2018	REVISED
07/2018	REVISED
08/2018	REVISED
09/2018	REVISED
10/2018	REVISED
11/2018	REVISED
12/2018	REVISED
01/2019	REVISED
02/2019	REVISED
03/2019	REVISED
04/2019	REVISED
05/2019	REVISED
06/2019	REVISED
07/2019	REVISED
08/2019	REVISED
09/2019	REVISED
10/2019	REVISED
11/2019	REVISED
12/2019	REVISED
01/2020	REVISED
02/2020	REVISED
03/2020	REVISED
04/2020	REVISED
05/2020	REVISED
06/2020	REVISED
07/2020	REVISED
08/2020	REVISED
09/2020	REVISED
10/2020	REVISED
11/2020	REVISED
12/2020	REVISED
01/2021	REVISED
02/2021	REVISED
03/2021	REVISED
04/2021	REVISED
05/2021	REVISED
06/2021	REVISED
07/2021	REVISED
08/2021	REVISED
09/2021	REVISED
10/2021	REVISED
11/2021	REVISED
12/2021	REVISED
01/2022	REVISED
02/2022	REVISED
03/2022	REVISED
04/2022	REVISED
05/2022	REVISED
06/2022	REVISED
07/2022	REVISED
08/2022	REVISED
09/2022	REVISED
10/2022	REVISED
11/2022	REVISED
12/2022	REVISED
01/2023	REVISED
02/2023	REVISED
03/2023	REVISED
04/2023	REVISED
05/2023	REVISED
06/2023	REVISED
07/2023	REVISED
08/2023	REVISED
09/2023	REVISED
10/2023	REVISED
11/2023	REVISED
12/2023	REVISED
01/2024	REVISED
02/2024	REVISED
03/2024	REVISED
04/2024	REVISED
05/2024	REVISED
06/2024	REVISED
07/2024	REVISED
08/2024	REVISED
09/2024	REVISED
10/2024	REVISED
11/2024	REVISED
12/2024	REVISED
01/2025	REVISED

ARCHITECTURAL SITE PLAN
 SHEET NO. _____
 DATE _____
 PROJECT NO. _____

A001



2 SECTION AT OUTDOOR DINING FEATURE WALL



1 ARCHITECTURAL SITE PLAN