

**TYPE-1 MAP AMENDMENT
C1-3 AND B1-3 TO B2-3
1635-43 W. 47TH STREET**

Applicant seeks a Type 1 map amendment to change the zoning classification of 1635-43 W. 47TH St. (the "Property") to B2-3, Neighborhood Mixed-Use District, from C1-3, Neighborhood Commercial District, and B1-3, Neighborhood Shopping District.

- A) Proposed land use: The Property owner will develop two 3-story residential 3-flat buildings, each 3,402 SF, with two parking spaces per building in a transit-served location on the westernmost area of the Property; 100% of the units will be affordable housing.

The easternmost area of the Property provides overflow parking for the New City Senior Living building located across Marshfield Avenue. It will be maintained as surface parking for the foreseeable future.

- B) Floor area ratio:

Existing Districts:	B1-3 TSL 100% affordable = C1-3 TSL 100% affordable =	4 FAR 4 FAR
Proposed District:	B2-3 TSL 100% affordable =	4 FAR
Proposed Development:		
	1635-38 W. 47 th St.: $\frac{0 \text{ SF parking}}{6,042.81 \text{ SF lot}} =$	0 FAR
	1641 W. 47 th St.: $\frac{3,402 \text{ SF building}}{3,017.53 \text{ SF lot}} =$	1.13 FAR
	1641 W. 47 th St.: $\frac{3,402 \text{ SF building}}{3,017.53 \text{ SF lot}} =$	1.13 FAR

- C) Density (lot area per dwelling unit ("MLA/DU")):

Existing Districts:	B1-3 TSL 100% affordable = C1-3 TSL 100% affordable =	300 MLA/DU 300 MLA/DU
Proposed District:	B2-3 TSL 100% affordable =	300 MLA/DU
Proposed Development:	1635-38 W. 47 th St.: $\frac{6,042.81 \text{ SF lot}}{\text{parking lot}} =$	N/A
	1641 W. 47 th St.: $\frac{3,015 \text{ SF lot}}{3 \text{ units}} =$	1,005 LA/DU
	1643 W. 47 th St.: $\frac{3,015 \text{ SF lot}}{3 \text{ units}} =$	1,005 LA/DU

D) Off-street parking: The Property is a Transit Served Location

	Required	Provided
1635-39 W. 47 th St. (surface parking)	N/A	16
1641 W. 47 th St. (3-flat residential)	3	2*
1643 W. 47 th St. (3-flat residential)	3	2*

* Authorization from DPD pending pursuant to CZO §17-10-0102-B

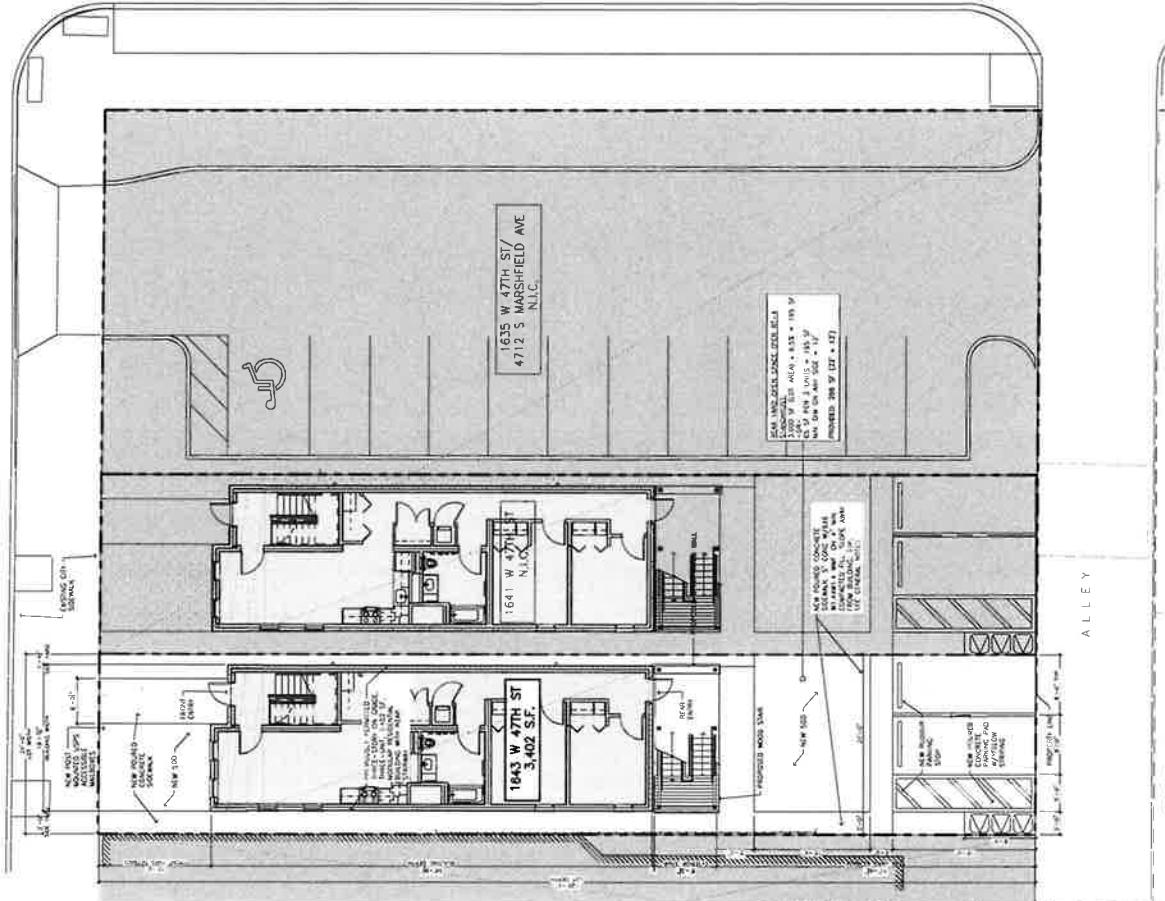
E) Setbacks:

- 1635-37 W. 47th St. (surface parking lot):
 - o Front: 7' - 0"
 - o Rear: N/A
 - o East: 7' - 0"
 - o West: N/A
- 1641 W. 47th St. (3-flat residential):
 - o Front: 15' - 0"
 - o Rear: 42' - 0^{7/8}"
 - o East: 1' - 4^{3/4}"
 - o West: 3' - 0"
- 1643 W. 47th St. (3-flat residential):
 - o Front: 15' - 0"
 - o Rear: 42' - 0^{7/8}"
 - o East: 1' - 4^{3/4}"
 - o West: 3' - 0"

F) Building height:

1635-37 W. 47 th St.	Surface parking lot	0' - 0"
1641 W. 47 th St.	3-flat residential building	30' - 10 ^{5/8} "
1643 W. 47 th St.	3-flat residential building	30' - 10 ^{5/8} "

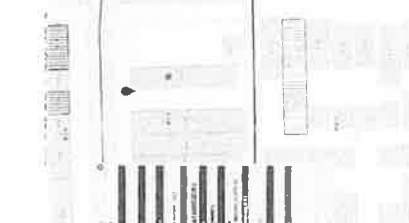
W 47TH STREET



- GENERAL NOTES**
1. EXISTING CONDITIONS SHALL BE SHOWN IN LIGHT GRAY.
 2. ALL NEW CONSTRUCTION SHALL BE SHOWN IN DARK GRAY.
 3. DIMENSIONS SHALL BE SHOWN IN FEET AND INCHES.
 4. DIMENSIONS SHALL BE SHOWN IN FEET AND INCHES.
 5. DIMENSIONS SHALL BE SHOWN IN FEET AND INCHES.

5 SITE PLAN GENERAL NOTES

SCALE: 1/8" = 1'-0"



4 ZONING MAP

SCALE: 1/8" = 1'-0"



2 SATELLITE

SCALE: 1/8" = 1'-0"

1 SITE PLAN

SCALE: 1/8" = 1'-0"

CHICAGO PERMIT NO.: F22323224



GROUP 1 DESIGN
 ARCHITECT OF RECORD
 1100 N. LAUREL STREET, SUITE 404
 CHICAGO, IL 60610
 312.977.0911
 312.977.0911
 312.977.0911
 312.977.0911
 312.977.0911

DESIGN CONSULTANT

OWNER

MODULAR THREE-FLAT
 SITE INSTALLATION
 1643 W 47TH STREET
 CHICAGO, IL



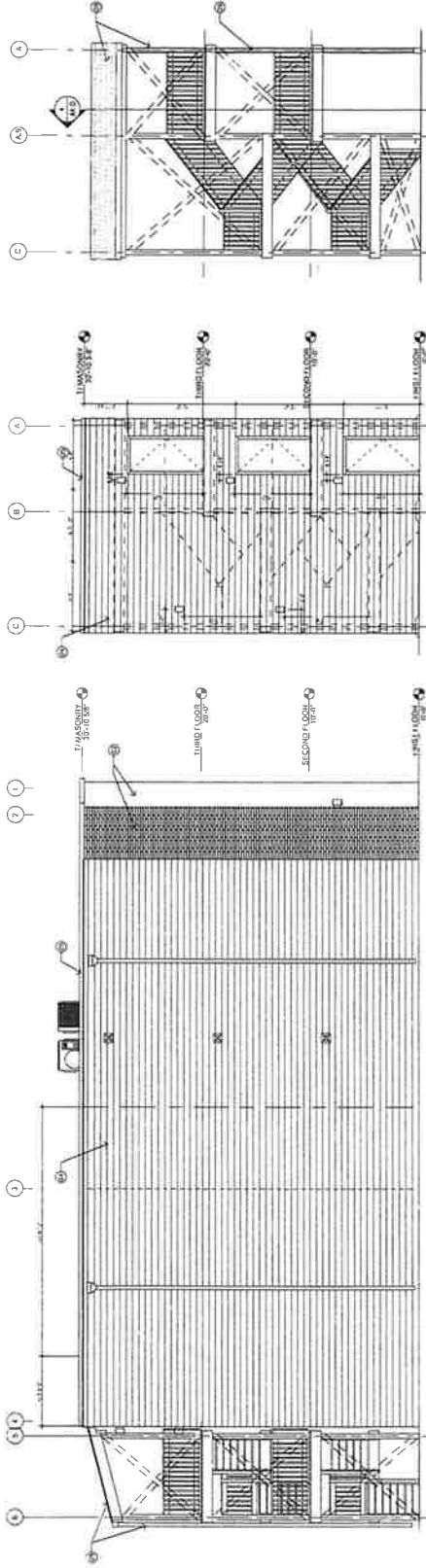
01	ZONING APPLICATION	03/23/2024
02	ZONING REVIEW	03/23/2024
03	ZONING APPLICATION	03/23/2024
04	PRELIMINARY REVIEW	03/23/2024
05	PRELIMINARY ZONING MEETING	03/23/2024
06	PRELIMINARY ZONING MEETING	03/23/2024
07	PRELIMINARY ZONING MEETING	03/23/2024
08	PRELIMINARY ZONING MEETING	03/23/2024
09	PRELIMINARY ZONING MEETING	03/23/2024
10	PRELIMINARY ZONING MEETING	03/23/2024

SITE PLAN

A1.0

EXTERIOR FACADE NOTES

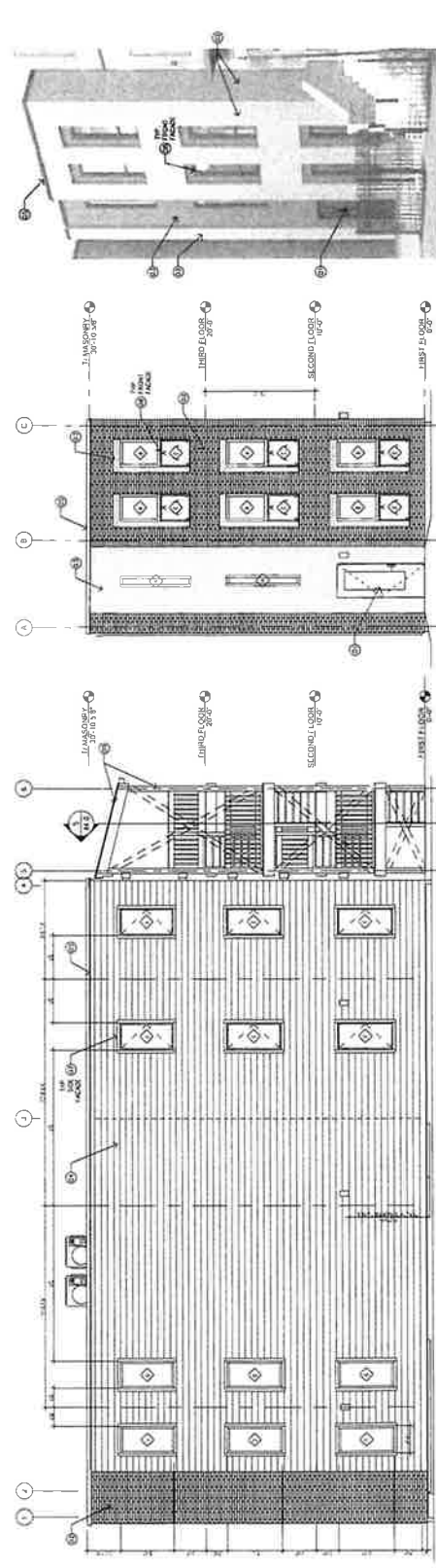
- 1) BRICK: 300mm x 150mm x 75mm (12" x 6" x 3")
- 2) BRICK: 300mm x 150mm x 75mm (12" x 6" x 3")
- 3) BRICK: 300mm x 150mm x 75mm (12" x 6" x 3")
- 4) BRICK: 300mm x 150mm x 75mm (12" x 6" x 3")
- 5) BRICK: 300mm x 150mm x 75mm (12" x 6" x 3")
- 6) BRICK: 300mm x 150mm x 75mm (12" x 6" x 3")
- 7) BRICK: 300mm x 150mm x 75mm (12" x 6" x 3")
- 8) BRICK: 300mm x 150mm x 75mm (12" x 6" x 3")
- 9) BRICK: 300mm x 150mm x 75mm (12" x 6" x 3")
- 10) BRICK: 300mm x 150mm x 75mm (12" x 6" x 3")
- 11) BRICK: 300mm x 150mm x 75mm (12" x 6" x 3")
- 12) BRICK: 300mm x 150mm x 75mm (12" x 6" x 3")
- 13) BRICK: 300mm x 150mm x 75mm (12" x 6" x 3")
- 14) BRICK: 300mm x 150mm x 75mm (12" x 6" x 3")
- 15) BRICK: 300mm x 150mm x 75mm (12" x 6" x 3")
- 16) BRICK: 300mm x 150mm x 75mm (12" x 6" x 3")
- 17) BRICK: 300mm x 150mm x 75mm (12" x 6" x 3")
- 18) BRICK: 300mm x 150mm x 75mm (12" x 6" x 3")
- 19) BRICK: 300mm x 150mm x 75mm (12" x 6" x 3")
- 20) BRICK: 300mm x 150mm x 75mm (12" x 6" x 3")
- 21) BRICK: 300mm x 150mm x 75mm (12" x 6" x 3")
- 22) BRICK: 300mm x 150mm x 75mm (12" x 6" x 3")
- 23) BRICK: 300mm x 150mm x 75mm (12" x 6" x 3")
- 24) BRICK: 300mm x 150mm x 75mm (12" x 6" x 3")
- 25) BRICK: 300mm x 150mm x 75mm (12" x 6" x 3")
- 26) BRICK: 300mm x 150mm x 75mm (12" x 6" x 3")
- 27) BRICK: 300mm x 150mm x 75mm (12" x 6" x 3")
- 28) BRICK: 300mm x 150mm x 75mm (12" x 6" x 3")
- 29) BRICK: 300mm x 150mm x 75mm (12" x 6" x 3")
- 30) BRICK: 300mm x 150mm x 75mm (12" x 6" x 3")
- 31) BRICK: 300mm x 150mm x 75mm (12" x 6" x 3")
- 32) BRICK: 300mm x 150mm x 75mm (12" x 6" x 3")
- 33) BRICK: 300mm x 150mm x 75mm (12" x 6" x 3")
- 34) BRICK: 300mm x 150mm x 75mm (12" x 6" x 3")
- 35) BRICK: 300mm x 150mm x 75mm (12" x 6" x 3")
- 36) BRICK: 300mm x 150mm x 75mm (12" x 6" x 3")
- 37) BRICK: 300mm x 150mm x 75mm (12" x 6" x 3")
- 38) BRICK: 300mm x 150mm x 75mm (12" x 6" x 3")
- 39) BRICK: 300mm x 150mm x 75mm (12" x 6" x 3")
- 40) BRICK: 300mm x 150mm x 75mm (12" x 6" x 3")
- 41) BRICK: 300mm x 150mm x 75mm (12" x 6" x 3")
- 42) BRICK: 300mm x 150mm x 75mm (12" x 6" x 3")
- 43) BRICK: 300mm x 150mm x 75mm (12" x 6" x 3")
- 44) BRICK: 300mm x 150mm x 75mm (12" x 6" x 3")
- 45) BRICK: 300mm x 150mm x 75mm (12" x 6" x 3")
- 46) BRICK: 300mm x 150mm x 75mm (12" x 6" x 3")
- 47) BRICK: 300mm x 150mm x 75mm (12" x 6" x 3")
- 48) BRICK: 300mm x 150mm x 75mm (12" x 6" x 3")
- 49) BRICK: 300mm x 150mm x 75mm (12" x 6" x 3")
- 50) BRICK: 300mm x 150mm x 75mm (12" x 6" x 3")
- 51) BRICK: 300mm x 150mm x 75mm (12" x 6" x 3")
- 52) BRICK: 300mm x 150mm x 75mm (12" x 6" x 3")
- 53) BRICK: 300mm x 150mm x 75mm (12" x 6" x 3")
- 54) BRICK: 300mm x 150mm x 75mm (12" x 6" x 3")
- 55) BRICK: 300mm x 150mm x 75mm (12" x 6" x 3")
- 56) BRICK: 300mm x 150mm x 75mm (12" x 6" x 3")
- 57) BRICK: 300mm x 150mm x 75mm (12" x 6" x 3")
- 58) BRICK: 300mm x 150mm x 75mm (12" x 6" x 3")
- 59) BRICK: 300mm x 150mm x 75mm (12" x 6" x 3")
- 60) BRICK: 300mm x 150mm x 75mm (12" x 6" x 3")
- 61) BRICK: 300mm x 150mm x 75mm (12" x 6" x 3")
- 62) BRICK: 300mm x 150mm x 75mm (12" x 6" x 3")
- 63) BRICK: 300mm x 150mm x 75mm (12" x 6" x 3")
- 64) BRICK: 300mm x 150mm x 75mm (12" x 6" x 3")
- 65) BRICK: 300mm x 150mm x 75mm (12" x 6" x 3")
- 66) BRICK: 300mm x 150mm x 75mm (12" x 6" x 3")
- 67) BRICK: 300mm x 150mm x 75mm (12" x 6" x 3")
- 68) BRICK: 300mm x 150mm x 75mm (12" x 6" x 3")
- 69) BRICK: 300mm x 150mm x 75mm (12" x 6" x 3")
- 70) BRICK: 300mm x 150mm x 75mm (12" x 6" x 3")
- 71) BRICK: 300mm x 150mm x 75mm (12" x 6" x 3")
- 72) BRICK: 300mm x 150mm x 75mm (12" x 6" x 3")
- 73) BRICK: 300mm x 150mm x 75mm (12" x 6" x 3")
- 74) BRICK: 300mm x 150mm x 75mm (12" x 6" x 3")
- 75) BRICK: 300mm x 150mm x 75mm (12" x 6" x 3")
- 76) BRICK: 300mm x 150mm x 75mm (12" x 6" x 3")
- 77) BRICK: 300mm x 150mm x 75mm (12" x 6" x 3")
- 78) BRICK: 300mm x 150mm x 75mm (12" x 6" x 3")
- 79) BRICK: 300mm x 150mm x 75mm (12" x 6" x 3")
- 80) BRICK: 300mm x 150mm x 75mm (12" x 6" x 3")
- 81) BRICK: 300mm x 150mm x 75mm (12" x 6" x 3")
- 82) BRICK: 300mm x 150mm x 75mm (12" x 6" x 3")
- 83) BRICK: 300mm x 150mm x 75mm (12" x 6" x 3")
- 84) BRICK: 300mm x 150mm x 75mm (12" x 6" x 3")
- 85) BRICK: 300mm x 150mm x 75mm (12" x 6" x 3")
- 86) BRICK: 300mm x 150mm x 75mm (12" x 6" x 3")
- 87) BRICK: 300mm x 150mm x 75mm (12" x 6" x 3")
- 88) BRICK: 300mm x 150mm x 75mm (12" x 6" x 3")
- 89) BRICK: 300mm x 150mm x 75mm (12" x 6" x 3")
- 90) BRICK: 300mm x 150mm x 75mm (12" x 6" x 3")
- 91) BRICK: 300mm x 150mm x 75mm (12" x 6" x 3")
- 92) BRICK: 300mm x 150mm x 75mm (12" x 6" x 3")
- 93) BRICK: 300mm x 150mm x 75mm (12" x 6" x 3")
- 94) BRICK: 300mm x 150mm x 75mm (12" x 6" x 3")
- 95) BRICK: 300mm x 150mm x 75mm (12" x 6" x 3")
- 96) BRICK: 300mm x 150mm x 75mm (12" x 6" x 3")
- 97) BRICK: 300mm x 150mm x 75mm (12" x 6" x 3")
- 98) BRICK: 300mm x 150mm x 75mm (12" x 6" x 3")
- 99) BRICK: 300mm x 150mm x 75mm (12" x 6" x 3")
- 100) BRICK: 300mm x 150mm x 75mm (12" x 6" x 3")



4 WEST ELEVATION
SCALE 3/16" = 1'-0"

5 WEST ELEVATION
SCALE 3/16" = 1'-0"

6 SOUTH ELEVATION
SCALE 3/16" = 1'-0"



1 FACADE RENDERING
SCALE 1/8" = 1'-0"

2 EAST ELEVATION
SCALE 3/16" = 1'-0"

3 NORTH ELEVATION
SCALE 3/16" = 1'-0"



ARCHITECT OF RECORD
GDL LLC
 212 N Sangamon St, Suite 4A
 Chicago, IL 60607
 Contact: Peter Toleno
 peter@peter.com
 peter.com
 HOKOMA (OMA) S11
 327 N Wabash Ave, Suite 1509
 Chicago, IL 60607
 Contact: Agostino Fernandez
 fernandez@hokoma.com
 STRUCTURAL ENGINEER: REAR WOOD POINTE
 2400 N PULASKI AVE
 CHICAGO, IL 60647
 Lake Zurich, Illinois 60047
 Contact: Paul Virgilio
 paul@vwg.us
 OWNER
CELADON PARTNERS
 2330 S Wabash Ave, Suite 4009
 Chicago, IL 60607
 Contact: Anna Gomez-Korva
 anna@celadon.com

MODULAR THREE-FLAT
 SITE INSTALLATION

CHICAGO, IL
 PROJECT NO. 2023-001
 DATE: 11/01/2023



PETER TOLENO
 PE
 11/01/2023

NO.	ISSUE	DATE
01	ISSUE	11/01/2023

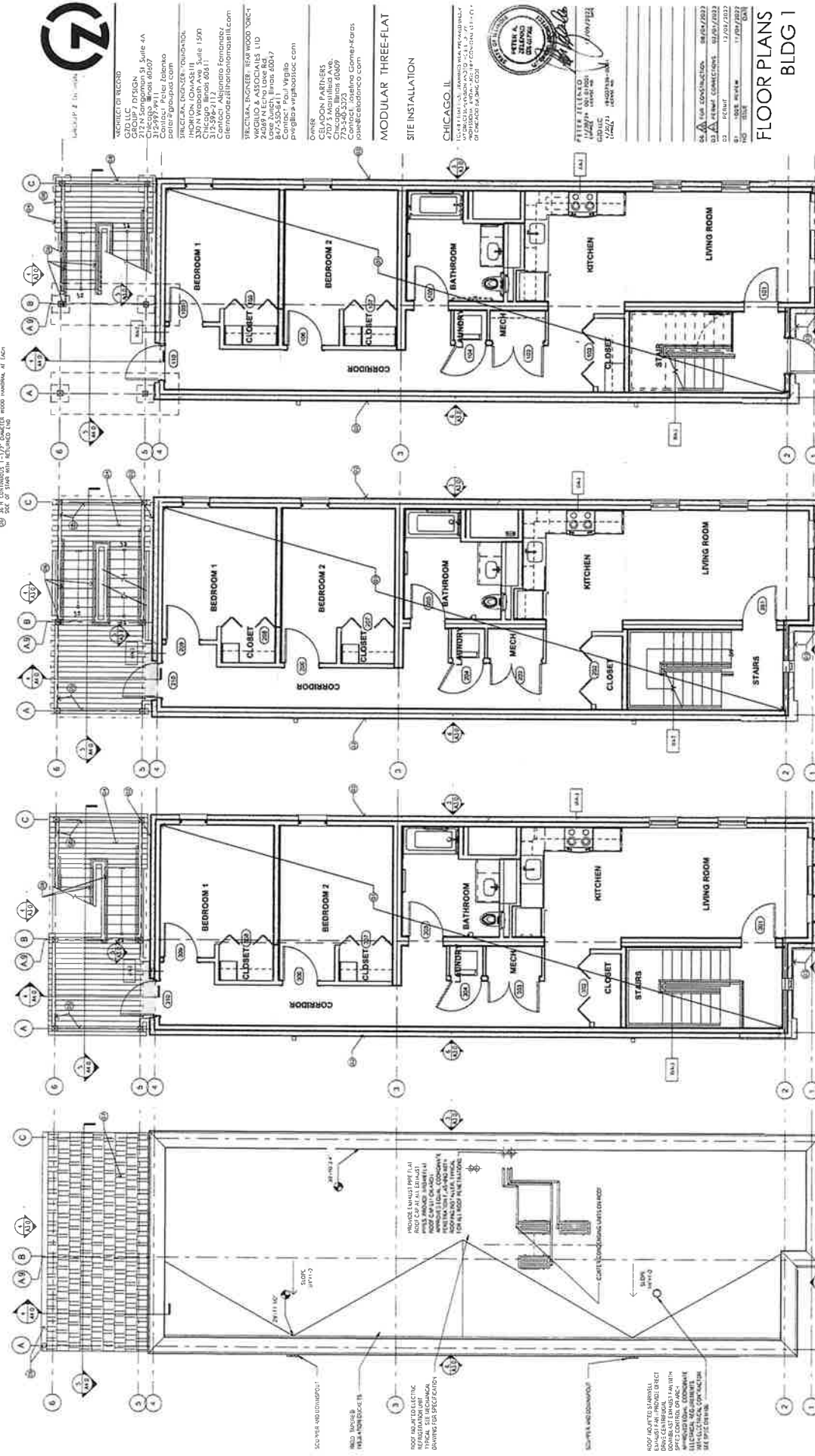
DATE OF CONSTRUCTION: 08/01/2023
 DATE OF CORRECTIONS: 07/01/2023
 PERMIT: 176092023
 DATE: 11/01/2023

ELEVATIONS
BLDG 1

A3.0

KEYED NOTES

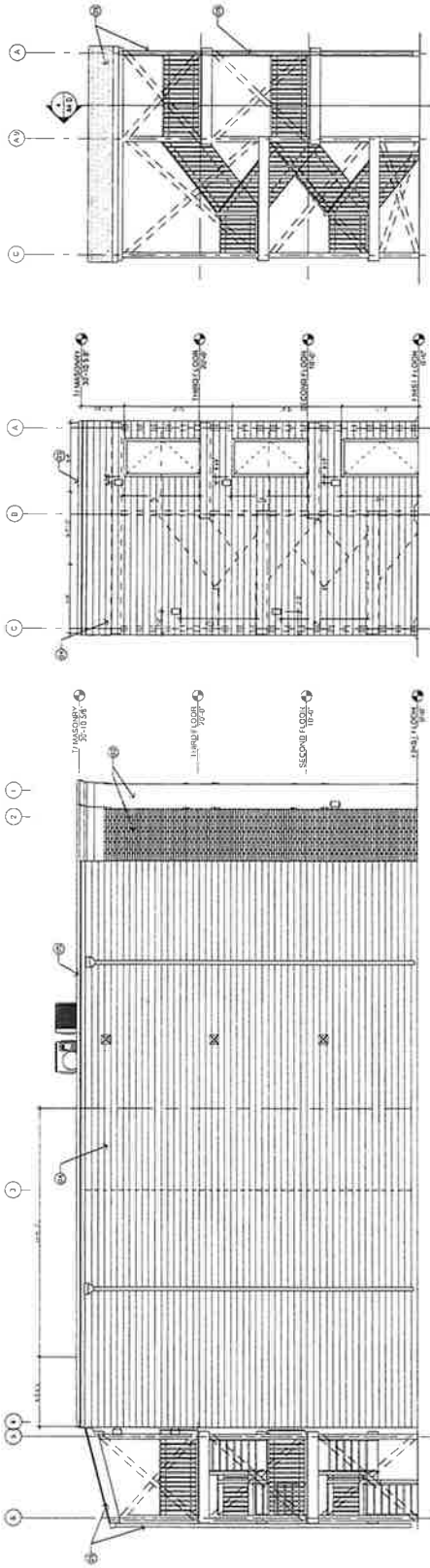
- 1) PROVIDE 1" x 1/2" DIMENSIONED WOOD ANCHORS AT EACH END OF STUD WALLS.
- 2) PROVIDE 1" x 1/2" DIMENSIONED WOOD ANCHORS AT EACH END OF STUD WALLS.
- 3) PROVIDE 1" x 1/2" DIMENSIONED WOOD ANCHORS AT EACH END OF STUD WALLS.
- 4) PROVIDE 1" x 1/2" DIMENSIONED WOOD ANCHORS AT EACH END OF STUD WALLS.
- 5) PROVIDE 1" x 1/2" DIMENSIONED WOOD ANCHORS AT EACH END OF STUD WALLS.
- 6) PROVIDE 1" x 1/2" DIMENSIONED WOOD ANCHORS AT EACH END OF STUD WALLS.
- 7) PROVIDE 1" x 1/2" DIMENSIONED WOOD ANCHORS AT EACH END OF STUD WALLS.
- 8) PROVIDE 1" x 1/2" DIMENSIONED WOOD ANCHORS AT EACH END OF STUD WALLS.
- 9) PROVIDE 1" x 1/2" DIMENSIONED WOOD ANCHORS AT EACH END OF STUD WALLS.
- 10) PROVIDE 1" x 1/2" DIMENSIONED WOOD ANCHORS AT EACH END OF STUD WALLS.
- 11) PROVIDE 1" x 1/2" DIMENSIONED WOOD ANCHORS AT EACH END OF STUD WALLS.
- 12) PROVIDE 1" x 1/2" DIMENSIONED WOOD ANCHORS AT EACH END OF STUD WALLS.
- 13) PROVIDE 1" x 1/2" DIMENSIONED WOOD ANCHORS AT EACH END OF STUD WALLS.
- 14) PROVIDE 1" x 1/2" DIMENSIONED WOOD ANCHORS AT EACH END OF STUD WALLS.
- 15) PROVIDE 1" x 1/2" DIMENSIONED WOOD ANCHORS AT EACH END OF STUD WALLS.
- 16) PROVIDE 1" x 1/2" DIMENSIONED WOOD ANCHORS AT EACH END OF STUD WALLS.
- 17) PROVIDE 1" x 1/2" DIMENSIONED WOOD ANCHORS AT EACH END OF STUD WALLS.
- 18) PROVIDE 1" x 1/2" DIMENSIONED WOOD ANCHORS AT EACH END OF STUD WALLS.
- 19) PROVIDE 1" x 1/2" DIMENSIONED WOOD ANCHORS AT EACH END OF STUD WALLS.
- 20) PROVIDE 1" x 1/2" DIMENSIONED WOOD ANCHORS AT EACH END OF STUD WALLS.



A2.0

EXTERIOR FACADE NOTES

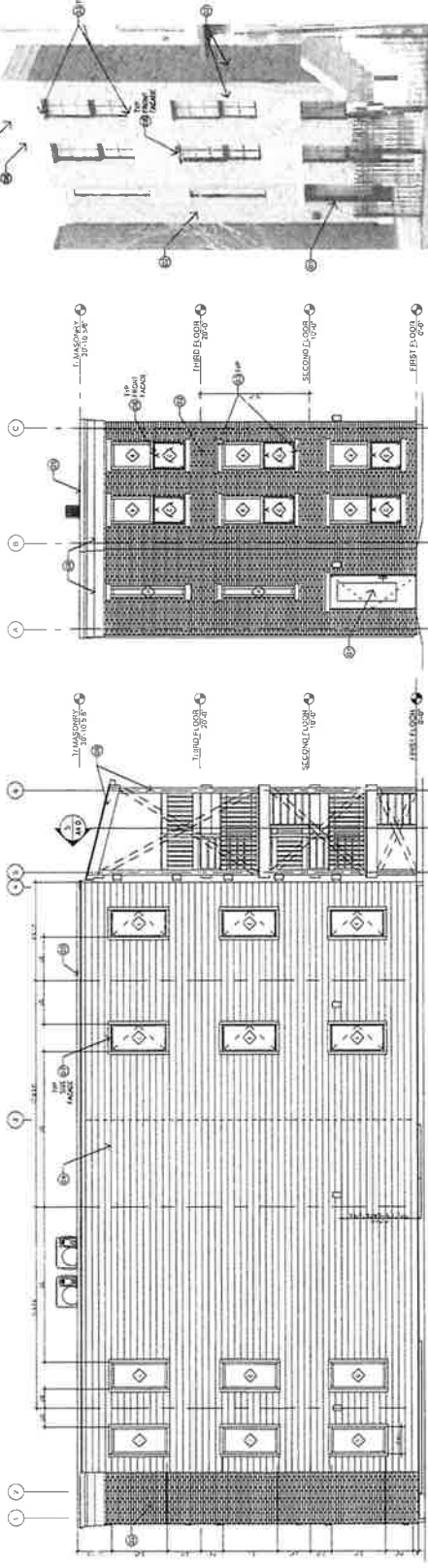
- 1) BACK DOOR WITH FULL WINDOW UNIT
- 2) CAST STONE, WHEELS AND HILLS BRICKS, STAINED BRICK TO MATCH EXISTING BRICKS
- 3) CAST STONE, WHEELS AND HILLS BRICKS, STAINED BRICK TO MATCH EXISTING BRICKS
- 4) CAST STONE, WHEELS AND HILLS BRICKS, STAINED BRICK TO MATCH EXISTING BRICKS
- 5) CAST STONE, WHEELS AND HILLS BRICKS, STAINED BRICK TO MATCH EXISTING BRICKS
- 6) CAST STONE, WHEELS AND HILLS BRICKS, STAINED BRICK TO MATCH EXISTING BRICKS
- 7) CAST STONE, WHEELS AND HILLS BRICKS, STAINED BRICK TO MATCH EXISTING BRICKS
- 8) CAST STONE, WHEELS AND HILLS BRICKS, STAINED BRICK TO MATCH EXISTING BRICKS
- 9) CAST STONE, WHEELS AND HILLS BRICKS, STAINED BRICK TO MATCH EXISTING BRICKS
- 10) CAST STONE, WHEELS AND HILLS BRICKS, STAINED BRICK TO MATCH EXISTING BRICKS
- 11) CAST STONE, WHEELS AND HILLS BRICKS, STAINED BRICK TO MATCH EXISTING BRICKS
- 12) CAST STONE, WHEELS AND HILLS BRICKS, STAINED BRICK TO MATCH EXISTING BRICKS
- 13) CAST STONE, WHEELS AND HILLS BRICKS, STAINED BRICK TO MATCH EXISTING BRICKS
- 14) CAST STONE, WHEELS AND HILLS BRICKS, STAINED BRICK TO MATCH EXISTING BRICKS
- 15) CAST STONE, WHEELS AND HILLS BRICKS, STAINED BRICK TO MATCH EXISTING BRICKS
- 16) CAST STONE, WHEELS AND HILLS BRICKS, STAINED BRICK TO MATCH EXISTING BRICKS
- 17) CAST STONE, WHEELS AND HILLS BRICKS, STAINED BRICK TO MATCH EXISTING BRICKS
- 18) CAST STONE, WHEELS AND HILLS BRICKS, STAINED BRICK TO MATCH EXISTING BRICKS
- 19) CAST STONE, WHEELS AND HILLS BRICKS, STAINED BRICK TO MATCH EXISTING BRICKS
- 20) CAST STONE, WHEELS AND HILLS BRICKS, STAINED BRICK TO MATCH EXISTING BRICKS



6 SOUTH ELEVATION
SCALE 3/16" = 1'-0"

5 WEST ELEVATION
SCALE 3/16" = 1'-0"

4 WEST ELEVATION
SCALE 3/16" = 1'-0"



3 NORTH ELEVATION
SCALE 3/16" = 1'-0"

2 EAST ELEVATION
SCALE 3/16" = 1'-0"

1 FACADE RENDERING
SCALE 1/8" = 1'-0"



PERMISSION RECORD
CEO LLC DESIGN
 212 N. Dearborn St. Suite 4A
 Chicago, IL 60614
 Contact: Peter Toleno
 peter@peter.com

ARCHITECT
INDIANA CONSULTANTS
 327 N. Wabash Ave. Suite 1500
 Chicago, IL 60611
 Contact: Alejandro Fernandez
 alex@indianac.com

STRUCTURAL ENGINEER - REAR WOOD DOCK
REAR WOOD DOCK
 2450 N. ELSTON AVE.
 Lake Zurich, IL 60047
 Contact: Paul Vergilio
 paul@vwillobac.com

OWNER
CELADON PARTNERS
 773-348-5379
 Chicago, IL 60611
 Contact: James Gomez-Correa
 james@celadon.com

MODULAR THREE-FLAT
SITE INSTALLATION

CHICAGO, IL
 1111 N. LAUREL STREET, UNIT 1000
 CHICAGO, IL 60610
 PROJECT NO. 1111-1000-001
 DATE: 11/07/2022



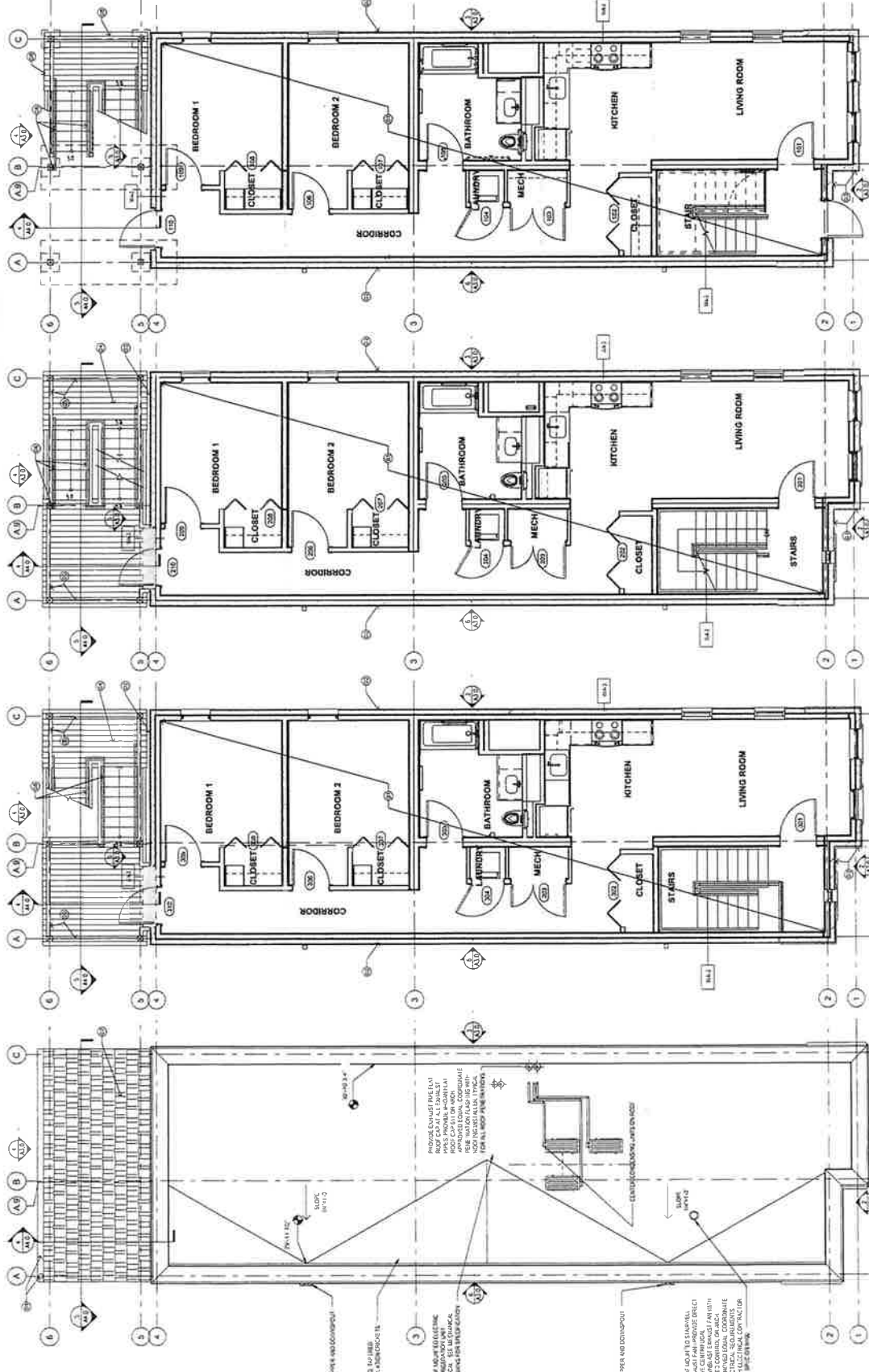
PETER TOLENO
 ARCHITECT
 NO. 043-000001
 STATE OF ILLINOIS
 DATE: 11/07/2022

ELEVATIONS
BLDG 2

A3.0

KEYED NOTES

- 1. PROVIDER, FURNISHED AND DELIVERED THROUGH BLDG. UNITS ASSIGNED AND INSTALLED BY E.C. CONWAY AS SHOWN ON DRAWING.
- 2. SEE E.C. CONWAY FOR MORE INFORMATION.
- 3. SEE E.C. CONWAY FOR MORE INFORMATION.
- 4. SEE E.C. CONWAY FOR MORE INFORMATION.
- 5. SEE E.C. CONWAY FOR MORE INFORMATION.
- 6. SEE E.C. CONWAY FOR MORE INFORMATION.
- 7. SEE E.C. CONWAY FOR MORE INFORMATION.
- 8. SEE E.C. CONWAY FOR MORE INFORMATION.
- 9. SEE E.C. CONWAY FOR MORE INFORMATION.
- 10. SEE E.C. CONWAY FOR MORE INFORMATION.
- 11. SEE E.C. CONWAY FOR MORE INFORMATION.
- 12. SEE E.C. CONWAY FOR MORE INFORMATION.
- 13. SEE E.C. CONWAY FOR MORE INFORMATION.
- 14. SEE E.C. CONWAY FOR MORE INFORMATION.
- 15. SEE E.C. CONWAY FOR MORE INFORMATION.
- 16. SEE E.C. CONWAY FOR MORE INFORMATION.
- 17. SEE E.C. CONWAY FOR MORE INFORMATION.
- 18. SEE E.C. CONWAY FOR MORE INFORMATION.
- 19. SEE E.C. CONWAY FOR MORE INFORMATION.
- 20. SEE E.C. CONWAY FOR MORE INFORMATION.
- 21. SEE E.C. CONWAY FOR MORE INFORMATION.
- 22. SEE E.C. CONWAY FOR MORE INFORMATION.
- 23. SEE E.C. CONWAY FOR MORE INFORMATION.
- 24. SEE E.C. CONWAY FOR MORE INFORMATION.
- 25. SEE E.C. CONWAY FOR MORE INFORMATION.
- 26. SEE E.C. CONWAY FOR MORE INFORMATION.
- 27. SEE E.C. CONWAY FOR MORE INFORMATION.
- 28. SEE E.C. CONWAY FOR MORE INFORMATION.
- 29. SEE E.C. CONWAY FOR MORE INFORMATION.
- 30. SEE E.C. CONWAY FOR MORE INFORMATION.
- 31. SEE E.C. CONWAY FOR MORE INFORMATION.
- 32. SEE E.C. CONWAY FOR MORE INFORMATION.
- 33. SEE E.C. CONWAY FOR MORE INFORMATION.
- 34. SEE E.C. CONWAY FOR MORE INFORMATION.
- 35. SEE E.C. CONWAY FOR MORE INFORMATION.
- 36. SEE E.C. CONWAY FOR MORE INFORMATION.
- 37. SEE E.C. CONWAY FOR MORE INFORMATION.
- 38. SEE E.C. CONWAY FOR MORE INFORMATION.
- 39. SEE E.C. CONWAY FOR MORE INFORMATION.
- 40. SEE E.C. CONWAY FOR MORE INFORMATION.
- 41. SEE E.C. CONWAY FOR MORE INFORMATION.
- 42. SEE E.C. CONWAY FOR MORE INFORMATION.
- 43. SEE E.C. CONWAY FOR MORE INFORMATION.
- 44. SEE E.C. CONWAY FOR MORE INFORMATION.
- 45. SEE E.C. CONWAY FOR MORE INFORMATION.
- 46. SEE E.C. CONWAY FOR MORE INFORMATION.
- 47. SEE E.C. CONWAY FOR MORE INFORMATION.
- 48. SEE E.C. CONWAY FOR MORE INFORMATION.
- 49. SEE E.C. CONWAY FOR MORE INFORMATION.
- 50. SEE E.C. CONWAY FOR MORE INFORMATION.
- 51. SEE E.C. CONWAY FOR MORE INFORMATION.
- 52. SEE E.C. CONWAY FOR MORE INFORMATION.
- 53. SEE E.C. CONWAY FOR MORE INFORMATION.
- 54. SEE E.C. CONWAY FOR MORE INFORMATION.
- 55. SEE E.C. CONWAY FOR MORE INFORMATION.
- 56. SEE E.C. CONWAY FOR MORE INFORMATION.
- 57. SEE E.C. CONWAY FOR MORE INFORMATION.
- 58. SEE E.C. CONWAY FOR MORE INFORMATION.
- 59. SEE E.C. CONWAY FOR MORE INFORMATION.
- 60. SEE E.C. CONWAY FOR MORE INFORMATION.
- 61. SEE E.C. CONWAY FOR MORE INFORMATION.
- 62. SEE E.C. CONWAY FOR MORE INFORMATION.
- 63. SEE E.C. CONWAY FOR MORE INFORMATION.
- 64. SEE E.C. CONWAY FOR MORE INFORMATION.
- 65. SEE E.C. CONWAY FOR MORE INFORMATION.
- 66. SEE E.C. CONWAY FOR MORE INFORMATION.
- 67. SEE E.C. CONWAY FOR MORE INFORMATION.
- 68. SEE E.C. CONWAY FOR MORE INFORMATION.
- 69. SEE E.C. CONWAY FOR MORE INFORMATION.
- 70. SEE E.C. CONWAY FOR MORE INFORMATION.
- 71. SEE E.C. CONWAY FOR MORE INFORMATION.
- 72. SEE E.C. CONWAY FOR MORE INFORMATION.
- 73. SEE E.C. CONWAY FOR MORE INFORMATION.
- 74. SEE E.C. CONWAY FOR MORE INFORMATION.
- 75. SEE E.C. CONWAY FOR MORE INFORMATION.
- 76. SEE E.C. CONWAY FOR MORE INFORMATION.
- 77. SEE E.C. CONWAY FOR MORE INFORMATION.
- 78. SEE E.C. CONWAY FOR MORE INFORMATION.
- 79. SEE E.C. CONWAY FOR MORE INFORMATION.
- 80. SEE E.C. CONWAY FOR MORE INFORMATION.
- 81. SEE E.C. CONWAY FOR MORE INFORMATION.
- 82. SEE E.C. CONWAY FOR MORE INFORMATION.
- 83. SEE E.C. CONWAY FOR MORE INFORMATION.
- 84. SEE E.C. CONWAY FOR MORE INFORMATION.
- 85. SEE E.C. CONWAY FOR MORE INFORMATION.
- 86. SEE E.C. CONWAY FOR MORE INFORMATION.
- 87. SEE E.C. CONWAY FOR MORE INFORMATION.
- 88. SEE E.C. CONWAY FOR MORE INFORMATION.
- 89. SEE E.C. CONWAY FOR MORE INFORMATION.
- 90. SEE E.C. CONWAY FOR MORE INFORMATION.
- 91. SEE E.C. CONWAY FOR MORE INFORMATION.
- 92. SEE E.C. CONWAY FOR MORE INFORMATION.
- 93. SEE E.C. CONWAY FOR MORE INFORMATION.
- 94. SEE E.C. CONWAY FOR MORE INFORMATION.
- 95. SEE E.C. CONWAY FOR MORE INFORMATION.
- 96. SEE E.C. CONWAY FOR MORE INFORMATION.
- 97. SEE E.C. CONWAY FOR MORE INFORMATION.
- 98. SEE E.C. CONWAY FOR MORE INFORMATION.
- 99. SEE E.C. CONWAY FOR MORE INFORMATION.
- 100. SEE E.C. CONWAY FOR MORE INFORMATION.



MODULAR THREE-FLAT
 CHICAGO, IL
 212 N. SULLY ST. SUITE 4A
 CHICAGO, ILLINOIS 60607
 CONTACT: PETER TELLENO
 peter@p3usa.com

OWNER:
 CELEADON PARTNERS
 270 S. MADISON AVE.
 7TH FLOOR
 CHICAGO, IL 60606
 CONTACT: PAUL VEGGIO
 paul@celedon.com

ARCHITECT:
 PETER TELLENO ARCHITECTS
 1120 N. LAUREL ST.
 CHICAGO, IL 60610
 CONTACT: PETER TELLENO
 peter@p3usa.com

ENGINEER:
 STANLEY ENGINEERS
 200 N. WABASH AVE. SUITE 1500
 CHICAGO, IL 60601
 CONTACT: ALBERTO ROMERO
 alberto@stanleyengineers.com

CONTRACTOR:
 CELEADON PARTNERS
 270 S. MADISON AVE.
 7TH FLOOR
 CHICAGO, IL 60606
 CONTACT: PAUL VEGGIO
 paul@celedon.com

GENERAL CONTRACTOR:
 PETER TELLENO ARCHITECTS
 1120 N. LAUREL ST.
 CHICAGO, IL 60610
 CONTACT: PETER TELLENO
 peter@p3usa.com

DATE:
 11/01/2022

REVISIONS:

NO.	DATE	DESCRIPTION
01	11/01/2022	ISSUE FOR PERMIT
02	11/01/2022	ISSUE FOR PERMIT
03	11/01/2022	ISSUE FOR PERMIT
04	11/01/2022	ISSUE FOR PERMIT
05	11/01/2022	ISSUE FOR PERMIT

FLOOR PLANS
BLDG 2

CHICAGO, IL

SCALE: 1/4" = 1'-0"

SCALE: 1/4" = 1'-0"

SCALE: 1/4" = 1'-0"

SCALE: 1/4" = 1'-0"

SCALE: 1/4" = 1'-0"

SCALE: 1/4" = 1'-0"