

CITY COUNCIL
COMMITTEE ON ZONING, LANDMARKS AND BUILDING STANDARDS

COUNCIL ORDER

RE: Approval of sign over 100 square feet in area or over 24 feet above grade

ORDERED, that the City Council hereby approves the following sign application submitted by:

Applicant*: Hampton Inn & Suites

(* The Applicant is the owner of the real property or the business tenant of the real property. Do not list the sign contractor, sign erector, sign company or advertising entity in the above space.)

This Order approves the following sign in accordance with Municipal Code of Chicago Section 13-20-680:

Address of Sign: 710 S. Seeley Ave Chicago, IL 60612

Zoning District: PD30

DOB Sign Permit Application #: 101046365

Sign Details:

1. On-premise OR Off-premise
2. Static sign OR Dynamic-image display sign
3. Number of sign faces 1
4. Projecting over the public way no (Yes or No) If yes, Public Way Use #: _____
5. Dimensions: Length 14 feet 4 inches Height 5 feet 6 inches
Total square feet in area: 79 feet _____ inches
6. Height above grade: 60 feet _____ inches
7. Elevation (side of building or lot where the sign will be erected): North
8. Name of Sign Contractor/Erector: Doyle Signs, Inc.

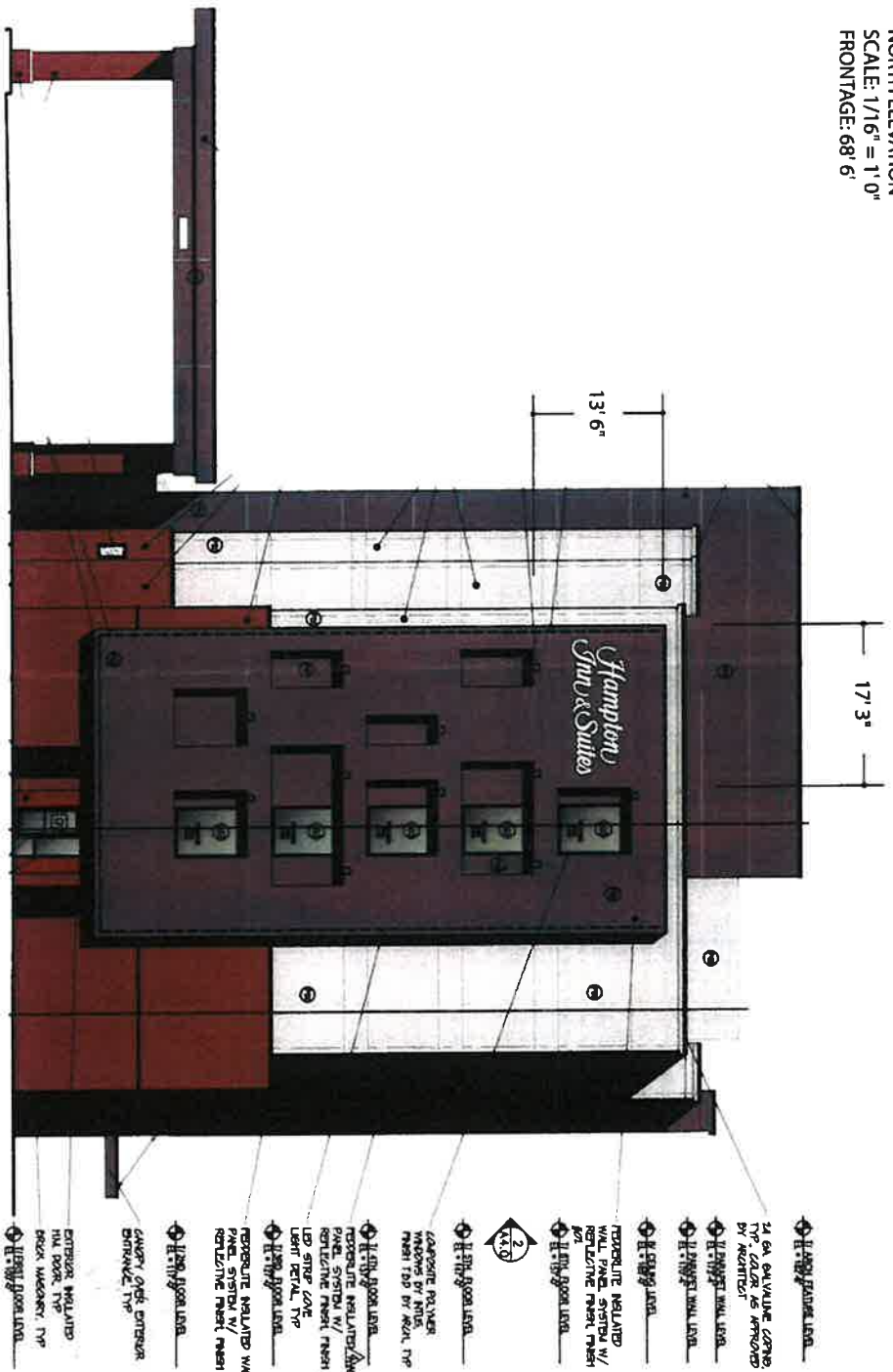
To be legal, such sign shall comply with all provisions of Title 17 of the Chicago Municipal Code ("Zoning Ordinance") and all other provisions of the Municipal Code governing the permitting, construction and maintenance and removal of signs and sign structures. Failure of the applicant and the applicant's successors to comply shall be grounds for invalidation or revocation of the sign permit.



Alderman

28th
Ward

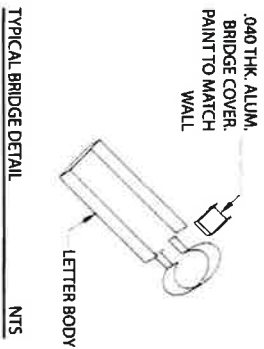
NORTH ELEVATION
 SCALE: 1/16" = 1' 0"
 FRONTAGE: 68' 6"



Print	1227GG	Date	10/16/23	OC#	42809	Line	B	SP	AC	Sign Type	HIS BL36S-W
CLIENT APPROVAL											
Title		Hampton Inn & Suites		Location		North Elevation					
City/State		Chicago IL		Size		5' 6" x 14' 3.625" (78.66 sq ft)					
Customer		Hampton Inn & Suites		Description		White day/Red night LED CLS					
AUTHORIZED SIGNATURE		DATE		Int. Note							
<p>1 of 2 This drawing contains original elements created by Lauretano Sign Group, Inc., and is property of Lauretano Sign Group, Inc. and is subject to all applicable copyright laws. This drawing may not be used in any way until full payment is received by Lauretano Sign Group, Inc. It is intended for review and approval purposes only, and is not to be reproduced, copied, transmitted by electronic means, or embodied in any manner to anyone outside your organization without the expressed written consent of Lauretano Sign Group, Inc.</p>											

LAURETANO
 SIGN GROUP
 1 Tremco Drive, Terryville, CT 06786
 phone: 860.582.0233 fax: 860.583.0949
 signs@lauretano.com www.lauretano.com

Scale: 1/4" = 1'



MATERIALS / COLORS

- A** White acrylic faces w/ 2nd surface Red PSV.
- B** 5" deep, .040 aluminum coil, Dark Bronze
- C** .063 aluminum backs, CAD-cut
- D** 1" Jewelle, Dark Bronze
- E** weep holes & light shields in low points, (2) req'd per letter
- F** 3/8" DIA. x 4" LAG BOLTS (2" X 2" GAL. SHOES)
- G** Red LEDs (3 LEDs/module, 2 modules/ft.)
- H** LOCKABLE PRIMARY POWER DISCONNECT SWITCH (BY OTHERS) INSIDE THE BUILDING
- I** WALL BUSTER OR EQUIVALENT, PLTC CABLE, SEAL PASS-THRU w/ SILICONE
- J** remote PS12-60 power supplies mounted in transformer enclosures
- K** f-box w/ primary electrical by others
- L** PRIMARY POWER DISCONNECT SWITCH INSTALLED ADJACENT TO SIGN
- M** sign back to fascia distance = 2"

NOTES

1. LIGHT-ENHANCEMENT PAINT TO BE APPLIED TO CL. INTERIORS.
2. UL LABELS REQUIRED - INSTALL IN ACCORDANCE WITH NEC
3. PRIMARY ELECTRICAL BY OTHERS.
4. FASCIA, EIFS, COLOR TBD

Typical Construction and Mounting Detail

NTS

PROCEED TO PRODUCTION

AUTHORIZED SIGNATURE

DATE

Print 1227GG
ES# 42809

Date 10/16/23
Line B

UL FILE NO. E70436

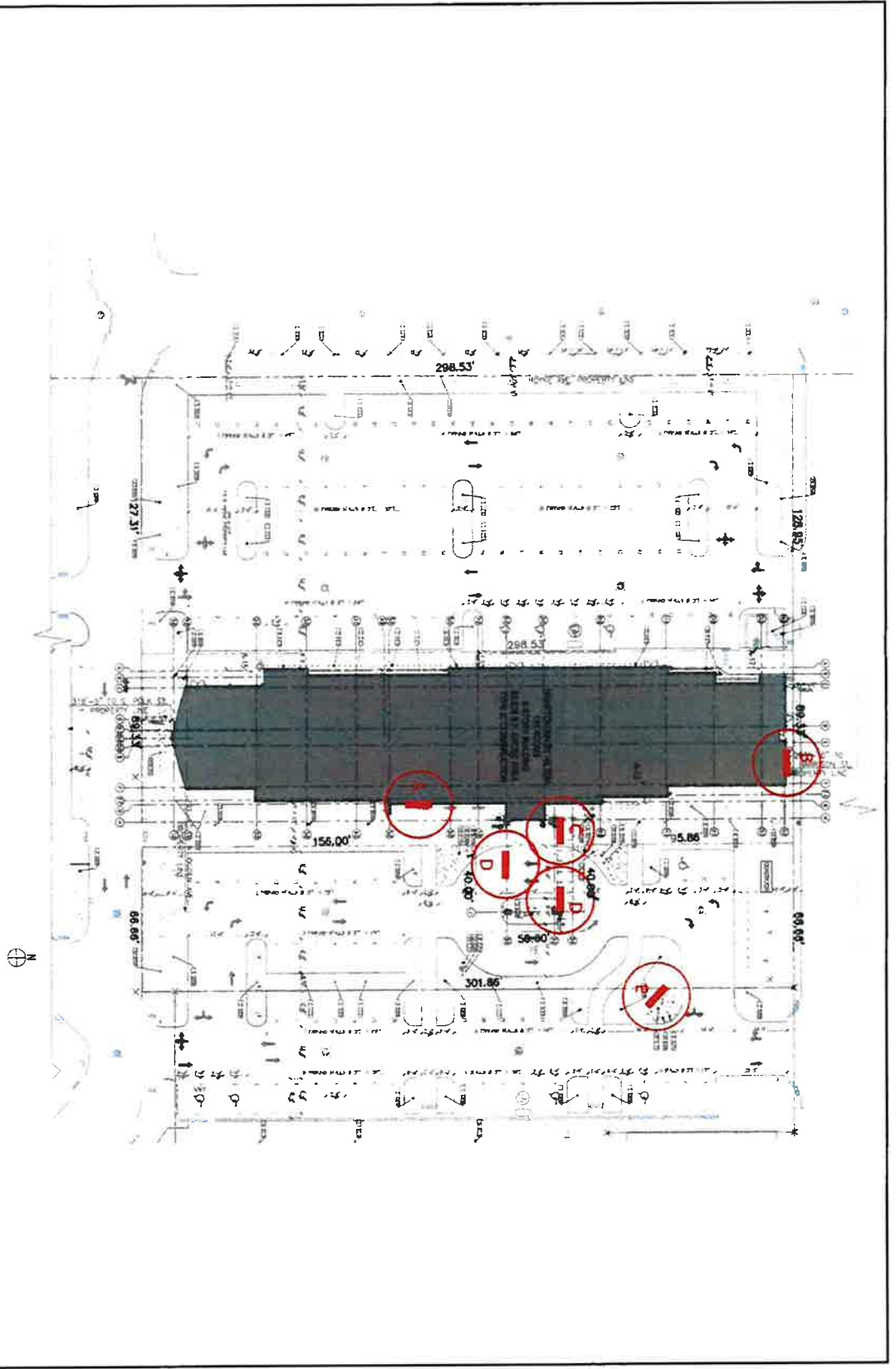
Installation Method
Shoes w/ Lags

Amps TBD
Volts 120

2 of 2

The drawing contains original elements created by Lauretano Sign Group, Inc. It is property of Lauretano Sign Group, Inc. and is subject to all applicable copyright laws. This drawing may not be used in any way until full payment is received by Lauretano Sign Group, Inc. It is reserved for review and approval purposes only, and is not to be reproduced, copied, transmitted by electronic mail, or included in any fashion to anyone outside your organization without the express written consent of Lauretano Sign Group, Inc.

LAURETANO
SIGN GROUP
1 Tenno Drive, Terryville, CT 06786 • Phone: 860.583.0233
sign@lauretano.com www.lauretano.com



Print 2935GG-2	Date 10/16/23	ES# 42809	SP AC	SITE PLAN
CLIENT APPROVAL		Title Hampton Inn & Suites	NOT TO SCALE	
AUTHORIZED SIGNATURE		City/State Chicago IL	Customer Hampton Inn & Suites	
DATE		Int. Note		
<p>1 of 1 The drawing contains original elements created by Lauretano Sign Group, Inc. and is subject to all applicable copyright laws. This drawing may not be used in any way until full payment is received by Lauretano Sign Group, Inc. It is intended for review and approval purposes only, and is not to be reproduced, copied, transmitted by electronic means, or included in any manner outside your organization without the expressed written consent of Lauretano Sign Group, Inc.</p>				
<p>LAURETANO SIGN GROUP 1 Tremco Drive, Terryville, CT 06786 Phone: 860.582.0233 Fax: 860.583.0949 signs@lauretano.com www.lauretano.com</p>				